

For Research Use Only

ENO1 Polyclonal antibody, PBS Only

Catalog Number: 55237-1-PBS

Featured Product



Basic Information

Catalog Number:

55237-1-PBS

Size:

100ug, Concentration: 1 mg/ml by Nanodrop;

Source:

Rabbit

Isotype:

IgG

GenBank Accession Number:

NM_001428

GeneID (NCBI):

2023

ENSEMBL Gene ID:

ENSG00000074800

UNIPROT ID:

P06733

Full Name:

enolase 1, (alpha)

Calculated MW:

47 kDa

Observed MW:

47 kDa

Purification Method:

Antigen affinity purification

Applications

Tested Applications:

WB, IHC, IF/ICC, IP, Indirect ELISA

Species Specificity:

human, mouse

Background Information

ENO1, also named as NNE, ENO1L1, MBPB1, MPB1 and MBP1, belongs to the enolase family. ENO1 is a metabolic enzyme involved in the synthesis of pyruvate. It also acts as a plasminogen receptor and mediates the activation of plasmin and extracellular matrix degradation. In tumor cells, ENO1 is up-regulated and supports the Warburg effect; it is expressed at the cell surface, where it promotes cancer invasion, and is subjected to a specific array of post-translational modifications, namely acetylation, methylation and phosphorylation. ENO1 overexpression and post-translational modifications could be of diagnostic and prognostic value in many cancer types. (PMID: 27814656). This antibody is specific to ENO1 and has no cross reaction with ENO2 and ENO3.

Storage

Storage:

Store at -80°C.

Storage Buffer:

PBS Only

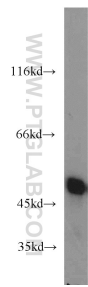
For technical support and original validation data for this product please contact:

T: 1 (888) 4PTGLAB (1-888-478-4522) (toll free in USA), or 1(312) 455-8498 (outside USA)

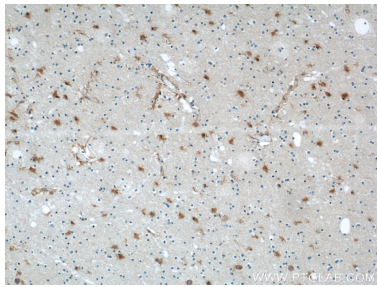
E: proteintech@ptglab.com
W: ptglab.com

This product is exclusively available under Proteintech Group brand and is not available to purchase from any other manufacturer.

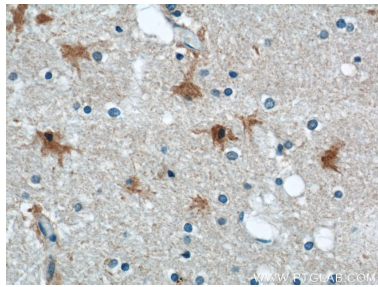
Selected Validation Data



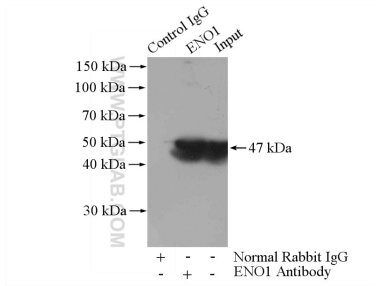
HeLa cells were subjected to SDS PAGE followed by western blot with 55237-1-AP (ENO1 antibody) at dilution of 1:2000 incubated at room temperature for 1.5 hours. This data was developed using the same antibody clone with 55237-1-PBS in a different storage buffer formulation.



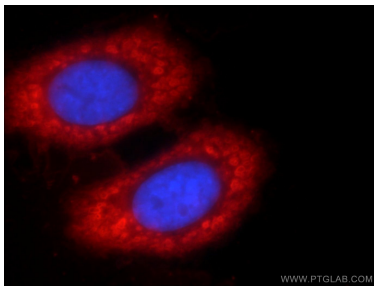
Immunohistochemical analysis of paraffin-embedded human brain using 55237-1-AP (ENO1 antibody) at dilution of 1:100 (under 10x lens). This data was developed using the same antibody clone with 55237-1-PBS in a different storage buffer formulation.



Immunohistochemical analysis of paraffin-embedded human brain using 55237-1-AP (ENO1 antibody) at dilution of 1:100 (under 40x lens). This data was developed using the same antibody clone with 55237-1-PBS in a different storage buffer formulation.



IP result of anti-ENO1 (IP:55237-1-AP, 4ug; Detection:55237-1-AP 1:500) with mouse brain tissue lysate 4000ug. This data was developed using the same antibody clone with 55237-1-PBS in a different storage buffer formulation.



Immunofluorescent analysis of HepG2 cells using 55237-1-AP (ENO1 antibody) at dilution of 1:50 and Rhodamine-Goat anti-Rabbit IgG. This data was developed using the same antibody clone with 55237-1-PBS in a different storage buffer formulation.