

For Research Use Only

# CARM1 Polyclonal antibody, PBS Only

Catalog Number: 55246-1-PBS

Featured Product



## Basic Information

### Catalog Number:

55246-1-PBS

### Size:

100ug, Concentration: 1 mg/ml by Nanodrop;

### Source:

Rabbit

### Isotype:

IgG

### GenBank Accession Number:

NM\_199141

### GeneID (NCBI):

10498

### UNIPROT ID:

Q86X55

### Full Name:

coactivator-associated arginine methyltransferase 1

### Calculated MW:

66 kDa

### Observed MW:

63-66 kDa, 55 kDa

### Purification Method:

Antigen affinity purification

## Applications

### Tested Applications:

IHC, IF/ICC, Indirect ELISA

### Species Specificity:

human, mouse, rat, monkey

## Background Information

CARM1, also named as PRMT4, belongs to the protein arginine N-methyltransferase family. It is a dual functional coregulator that facilitates transcription initiation by methylation of Arg17 and Arg26 of histone H3 and also dictates the subsequent coactivator complex disassembly by methylation of the steroid receptor coactivator family coactivators and p300/cAMP-response element-binding protein. CARM1 functions as a coactivator for many nuclear receptors, such as oestrogen receptor, androgen receptor, thyroid receptor and farnesoid X-receptor. It also coactivates other transcription factors such as myocyte enhancer factor 2C (MEF2C),  $\beta$ -catenin, p53, nuclear factor (NF)- $\kappa$ B and the cAMP-responsive element-binding factor. The enzymatic activity and coactivator function of CARM1 has been found to be inactivated through phosphorylation at a conserved serine residue at mitosis stage. This antibody was generated against a synthetic peptide corresponding to a fragment of human CARM1. It is expected to specifically recognize the CARM1. In certain type of cells, like HeLa, double bands can be detected with this antibody. This may due to the additional PTM sites in cells themselves.

## Storage

### Storage:

Store at -80°C.

### Storage Buffer:

PBS Only

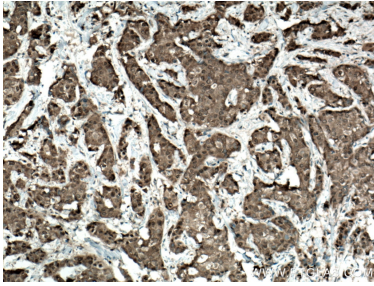
For technical support and original validation data for this product please contact:

T: 1 (888) 4PTGLAB (1-888-478-4522) (toll free in USA), or 1(312) 455-8498 (outside USA)

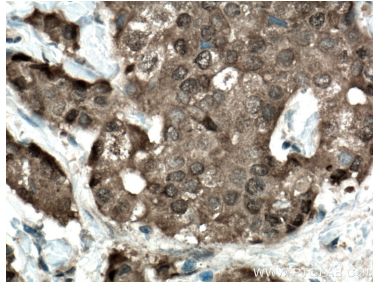
E: [proteintech@ptglab.com](mailto:proteintech@ptglab.com)  
W: [ptglab.com](http://ptglab.com)

This product is exclusively available under Proteintech Group brand and is not available to purchase from any other manufacturer.

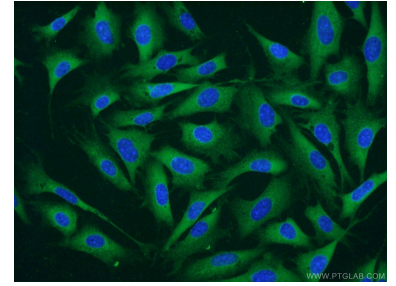
## Selected Validation Data



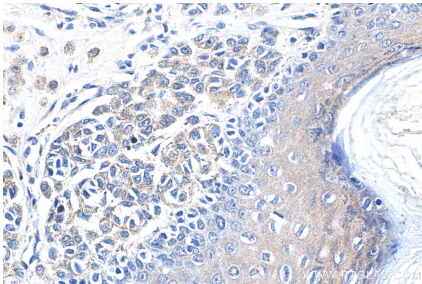
Immunohistochemical analysis of paraffin-embedded human breast cancer tissue slide using 55246-1-AP (CARM1 antibody) at dilution of 1:200 (under 10x lens). Heat mediated antigen retrieval with Tris-EDTA buffer (pH 9.0). This data was developed using the same antibody clone with 55246-1-PBS in a different storage buffer formulation.



Immunohistochemical analysis of paraffin-embedded human breast cancer tissue slide using 55246-1-AP (CARM1 antibody) at dilution of 1:200 (under 40x lens). Heat mediated antigen retrieval with Tris-EDTA buffer (pH 9.0). This data was developed using the same antibody clone with 55246-1-PBS in a different storage buffer formulation.



Immunofluorescent analysis of NIH/3T3 cells using 55246-1-AP (CARM1 antibody) at dilution of 1:50 and Alexa Fluor 488-conjugated AffiniPure Goat Anti-Rabbit IgG(H+L). This data was developed using the same antibody clone with 55246-1-PBS in a different storage buffer formulation.



Immunohistochemical analysis of paraffin-embedded human malignant melanoma tissue slide using 55246-1-AP (CARM1 antibody) at dilution of 1:200 (under 40x lens). This data was developed using the same antibody clone with 55246-1-PBS in a different storage buffer formulation.