

For Research Use Only

# MAP4K4 Polyclonal antibody

Catalog Number: 55247-1-AP

Featured Product

14 Publications



## Basic Information

### Catalog Number:

55247-1-AP

### Size:

150ul, Concentration: 930 ug/ml by Nanodrop;

### Source:

Rabbit

### Isotype:

IgG

### GenBank Accession Number:

NM\_004834

### GeneID (NCBI):

9448

### UNIPROT ID:

O95819

### Full Name:

mitogen-activated protein kinase kinase kinase 4

### Calculated MW:

151 kDa

### Observed MW:

130-160 kDa

### Purification Method:

Antigen affinity purification

### Recommended Dilutions:

WB 1:1000-1:4000

IP 0.5-4.0 ug for 1.0-3.0 mg of total protein lysate

IHC 1:20-1:200

## Applications

### Tested Applications:

WB, IHC, IP, ELISA

### Cited Applications:

WB, IHC, IF, CoIP

### Species Specificity:

human

### Cited Species:

human, mouse, rat

### Positive Controls:

WB : HK-2 cells, Jurkat cells, PC-3 cells

IP : Jurkat cells,

IHC : human skeletal muscle tissue, human placenta tissue, human liver tissue

**Note-IHC: suggested antigen retrieval with TE buffer pH 9.0; (\*) Alternatively, antigen retrieval may be performed with citrate buffer pH 6.0**

## Background Information

MAP4K4, also named as RAB8IP1, GLK and MEKKK4, belongs to the protein kinase superfamily, STE Ser/Thr protein kinase family and STE20 subfamily. It may play a role in the response to environmental stress. MAP4K4 appears to act upstream of the JUN N-terminal pathway. This antibody is specific to MAP4K4.

## Notable Publications

Author	Pubmed ID	Journal	Application
Chongjie Yao	36045396	J Neuroinflammation	WB,IF
Hui Cheng	27754501	Mol Biosyst	WB
Jingzi Zhang	32105074	J Proteome Res	WB

## Storage

### Storage:

Store at -20°C. Stable for one year after shipment.

### Storage Buffer:

PBS with 0.02% sodium azide and 50% glycerol, pH7.3

Aliquoting is unnecessary for -20°C storage

\*\*\* 20ul sizes contain 0.1% BSA

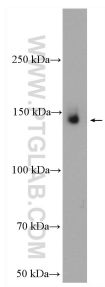
For technical support and original validation data for this product please contact:

T: 1 (888) 4PTGLAB (1-888-478-4522) (toll free in USA), or 1(312) 455-8498 (outside USA)

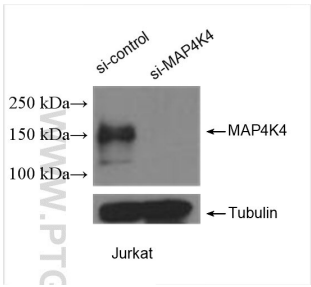
E: [proteintech@ptglab.com](mailto:proteintech@ptglab.com)  
W: [ptglab.com](http://ptglab.com)

This product is exclusively available under Proteintech Group brand and is not available to purchase from any other manufacturer.

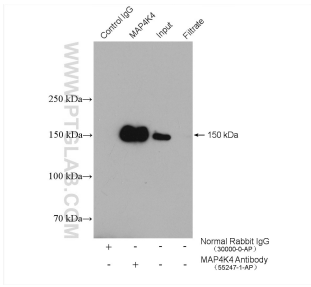
Selected Validation Data



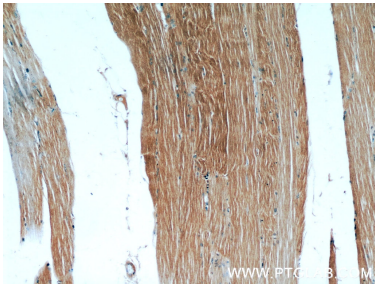
Jurkat cells were subjected to SDS PAGE followed by western blot with 55247-1-AP (MAP4K4 antibody) at dilution of 1:300 incubated at room temperature for 1.5 hours.



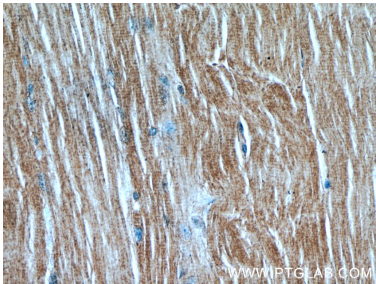
WB result of MAP4K4 antibody (55247-1-AP; 1:2000; incubated at room temperature for 1.5 hours) with sh-Control and sh-MAP4K4 transfected Jurkat cells.



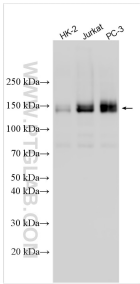
IP result of anti-MAP4K4 (IP:55247-1-AP, 4ug; Detection:55247-1-AP 1:300) with Jurkat cells lysate 4000 ug.



Immunohistochemical analysis of paraffin-embedded human skeletal muscle using 55247-1-AP (MAP4K4 antibody) at dilution of 1:50 (under 10x lens).



Immunohistochemical analysis of paraffin-embedded human skeletal muscle using 55247-1-AP (MAP4K4 antibody) at dilution of 1:50 (under 40x lens).



Various lysates were subjected to SDS PAGE followed by western blot with 55247-1-AP (MAP4K4 antibody) at dilution of 1:2000 incubated at room temperature for 1.5 hours.