

For Research Use Only

MAP4K4 Polyclonal antibody, PBS Only

Catalog Number: 55247-1-PBS

Featured Product



Basic Information

Catalog Number:

55247-1-PBS

Size:

100ug, Concentration: 1 mg/ml by Nanodrop;

Source:

Rabbit

Isotype:

IgG

GenBank Accession Number:

NM_004834

GeneID (NCBI):

9448

UNIPROT ID:

O95819

Full Name:

mitogen-activated protein kinase kinase kinase 4

Calculated MW:

151 kDa

Observed MW:

130-160 kDa

Purification Method:

Antigen affinity purification

Applications

Tested Applications:

WB, IHC, IP, Indirect ELISA

Species Specificity:

human

Background Information

MAP4K4, also named as RAB8IPL1, GLK and MEKKK4, belongs to the protein kinase superfamily, STE Ser/Thr protein kinase family and STE20 subfamily. It may play a role in the response to environmental stress. MAP4K4 appears to act upstream of the JUN N-terminal pathway. This antibody is specific to MAP4K4.

Storage

Storage:

Store at -80°C.

Storage Buffer:

PBS only, pH7.3

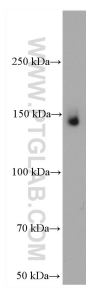
For technical support and original validation data for this product please contact:

T: 1 (888) 4PTGLAB (1-888-478-4522) (toll free in USA), or 1(312) 455-8498 (outside USA)

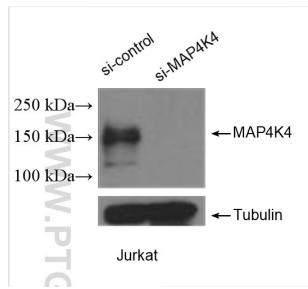
E: proteintech@ptglab.com
W: ptglab.com

This product is exclusively available under Proteintech Group brand and is not available to purchase from any other manufacturer.

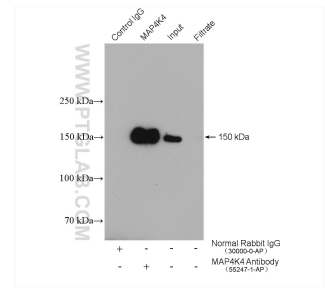
Selected Validation Data



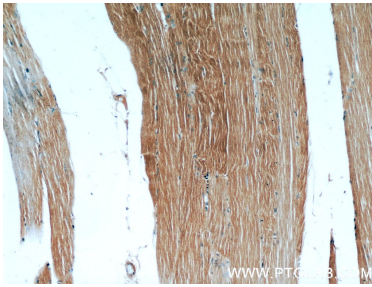
Jurkat cells were subjected to SDS PAGE followed by western blot with 55247-1-AP (MAP4K4 antibody) at dilution of 1:300 incubated at room temperature for 1.5 hours. This data was developed using the same antibody clone with 55247-1-PBS in a different storage buffer formulation.



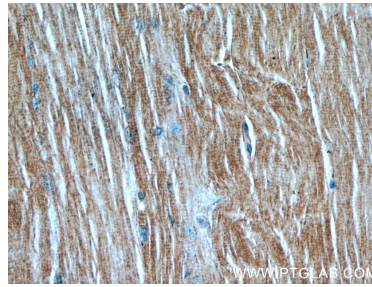
WB result of MAP4K4 antibody (55247-1-AP; 1:2000; incubated at room temperature for 1.5 hours) with sh-Control and sh-MAP4K4 transfected Jurkat cells. This data was developed using the same antibody clone with 55247-1-PBS in a different storage buffer formulation.



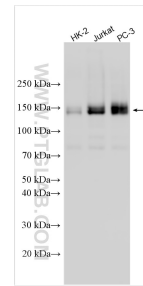
IP result of anti-MAP4K4 (IP:55247-1-AP, 4ug; Detection:55247-1-AP 1:300) with Jurkat cells lysate 4000 ug. This data was developed using the same antibody clone with 55247-1-PBS in a different storage buffer formulation.



Immunohistochemical analysis of paraffin-embedded human skeletal muscle using 55247-1-AP (MAP4K4 antibody) at dilution of 1:50 (under 10x lens). This data was developed using the same antibody clone with 55247-1-PBS in a different storage buffer formulation.



Immunohistochemical analysis of paraffin-embedded human skeletal muscle using 55247-1-AP (MAP4K4 antibody) at dilution of 1:50 (under 40x lens). This data was developed using the same antibody clone with 55247-1-PBS in a different storage buffer formulation.



Various lysates were subjected to SDS PAGE followed by western blot with 55247-1-AP (MAP4K4 antibody) at dilution of 1:2000 incubated at room temperature for 1.5 hours. This data was developed using the same antibody clone with 55247-1-PBS in a different storage buffer formulation.