

For Research Use Only

MASP2 Polyclonal antibody

Catalog Number: 55252-1-AP



Basic Information

Catalog Number: 55252-1-AP	GenBank Accession Number: NM_006610	Purification Method: Antigen affinity purification
Size: 150ul , Concentration: 200 µg/ml by Nanodrop;	GeneID (NCBI): 10747	Recommended Dilutions: WB 1:500-1:2000 IHC 1:50-1:500
Source: Rabbit	Full Name: mannan-binding lectin serine peptidase 2	
Isotype: IgG	Calculated MW: 76 kDa	
	Observed MW: 68 kDa	

Applications

Tested Applications: IHC, WB, ELISA	Positive Controls: WB : mouse kidney tissue, mouse liver tissue IHC : human liver tissue,
Species Specificity: human	
Note-IHC: suggested antigen retrieval with TE buffer pH 9.0; (*) Alternatively, antigen retrieval may be performed with citrate buffer pH 6.0	

Background Information

Mannan-binding lectin serine protease 2 (MASP2) is a serum protease that plays an important role in the activation of the complement system via mannose-binding lectin. MASP2 contains a 15-amino acid signal peptide, the 3 amino acids essential for the active center of a serine protease, and calcium-binding residues in the epidermal growth factor like domain.

Storage

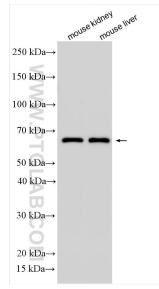
Storage:
Store at -20°C. Stable for one year after shipment.
Storage Buffer:
PBS with 0.02% sodium azide and 50% glycerol pH 7.3.
Aliquoting is unnecessary for -20°C storage

*** 20ul sizes contain 0.1% BSA

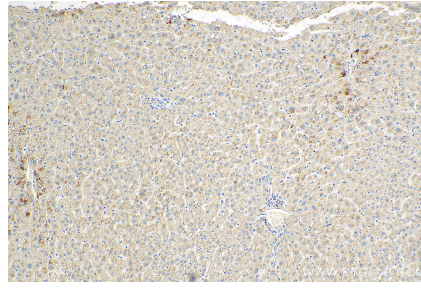
For technical support and original validation data for this product please contact:
T: 1 (888) 4PTGLAB (1-888-478-4522) (toll free in USA), or 1(312) 455-8498 (outside USA) E: proteintech@ptglab.com
W: ptglab.com

This product is exclusively available under Proteintech Group brand and is not available to purchase from any other manufacturer.

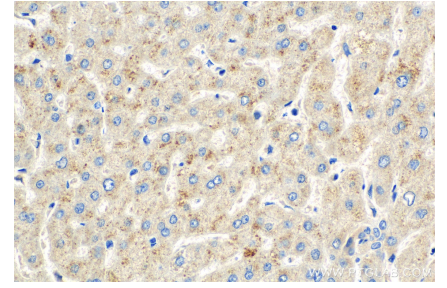
Selected Validation Data



Various lysates were subjected to SDS PAGE followed by western blot with 55252-1-AP (MASP2 antibody) at dilution of 1:1000 incubated at room temperature for 1.5 hours.



Immunohistochemical analysis of paraffin-embedded human liver tissue slide using 55252-1-AP (MASP2 antibody) at dilution of 1:200 (under 10x lens). Heat mediated antigen retrieval with Tris-EDTA buffer (pH 9.0).



Immunohistochemical analysis of paraffin-embedded human liver tissue slide using 55252-1-AP (MASP2 antibody) at dilution of 1:200 (under 40x lens). Heat mediated antigen retrieval with Tris-EDTA buffer (pH 9.0).