

For Research Use Only

# DRAM Polyclonal antibody

Catalog Number: 55272-1-AP



## Basic Information

Catalog Number:

55272-1-AP

Size:

150ul, Concentration: 500 ug/ml by Nanodrop;

Source:

Rabbit

Isotype:

IgG

GenBank Accession Number:

NM\_018370

GeneID (NCBI):

55332

UNIPROT ID:

Q8N682

Full Name:

damage-regulated autophagy modulator

Calculated MW:

26 kDa

Observed MW:

26 kDa

Purification Method:

Antigen affinity purification

Recommended Dilutions:

WB 1:500-1:2000

## Applications

Tested Applications:

WB, ELISA

Species Specificity:

human

Positive Controls:

WB : A431 cells, HepG2 cells

## Background Information

Damage-regulated autophagy modulator (DRAM) is a lysosomal membrane protein of autophagy that enriches in lung tissue and plays a central role in p53/TP53-mediated apoptosis (PMID: 16839881), which increased autophagy flux by promoting lysosomal acidification and protease activation (PMID: 23696801). It has 238 amino acids and six hydrophobic transmembrane regions. Reports show DRAM to be downregulated in squamous cancers, indicating a selective pressure to lose DRAM during tumor development (PMID: 17102582). Overexpression of DRAM1 can promote mitophagy and enhance mitochondrial function (PMID: 31204316).

## Storage

Storage:

Store at -20°C. Stable for one year after shipment.

Storage Buffer:

PBS with 0.02% sodium azide and 50% glycerol pH 7.3.

Aliquoting is unnecessary for -20°C storage

\*\*\* 20ul sizes contain 0.1% BSA

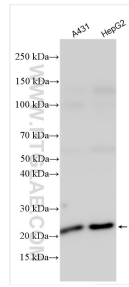
For technical support and original validation data for this product please contact:

T: 1 (888) 4PTGLAB (1-888-478-4522) (toll free in USA), or 1(312) 455-8498 (outside USA)

E: [proteintech@ptglab.com](mailto:proteintech@ptglab.com)  
W: [ptglab.com](http://ptglab.com)

This product is exclusively available under Proteintech Group brand and is not available to purchase from any other manufacturer.

## Selected Validation Data



Various lysates were subjected to SDS PAGE followed by western blot with 55272-1-AP (DRAM antibody) at dilution of 1:1000 incubated at room temperature for 1.5 hours.