

For Research Use Only

# CTAGE5 Polyclonal antibody

Catalog Number: 55279-1-AP



## Basic Information

<b>Catalog Number:</b> 55279-1-AP	<b>GenBank Accession Number:</b> NM_005930	<b>Purification Method:</b> Antigen affinity purification
<b>Size:</b> 150ul , Concentration: 300 µg/ml by Nanodrop and 100 µg/ml by Bradford method using BSA as the standard;	<b>GeneID (NCBI):</b> 4253	<b>Recommended Dilutions:</b> WB 1:500-1:1000 IHC 1:50-1:500
<b>Source:</b> Rabbit	<b>UNIPROT ID:</b> Q96PC5	
<b>Isotype:</b> IgG	<b>Full Name:</b> CTAGE family, member 5	
	<b>Calculated MW:</b> 92 kDa	
	<b>Observed MW:</b> 100-110 kDa	

## Applications

<b>Tested Applications:</b> IHC, WB, ELISA	<b>Positive Controls:</b>
<b>Species Specificity:</b> human	<b>WB :</b> human testis tissue, human brain tissue
<b>Note-IHC:</b> suggested antigen retrieval with <b>TE buffer pH 9.0; (*) Alternatively, antigen retrieval may be performed with citrate buffer pH 6.0</b>	<b>IHC :</b> human prostate cancer tissue,

## Background Information

Cutaneous T cell lymphoma-associated antigen 5 (CTAGE5), also named meningioma-expressed antigen 6 (MEA6/MGEA6), belongs to the CTAGE family. It is a tumor-associated antigen. This antibody is specific to CTAGE5. It can recognize all the isoforms except isoform 5B.

## Storage

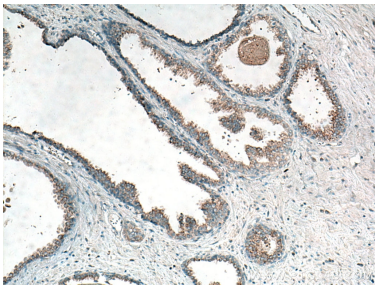
**Storage:**  
Store at -20°C. Stable for one year after shipment.  
**Storage Buffer:**  
PBS with 0.02% sodium azide and 50% glycerol pH 7.3.  
**Aliquoting is unnecessary for -20°C storage**

\*\*\* 20ul sizes contain 0.1% BSA

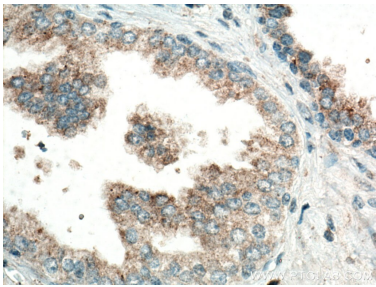
For technical support and original validation data for this product please contact:  
T: 1 (888) 4PTGLAB (1-888-478-4522) (toll free in USA), or 1(312) 455-8498 (outside USA)  
E: [proteintech@ptglab.com](mailto:proteintech@ptglab.com)  
W: [ptglab.com](http://ptglab.com)

This product is exclusively available under Proteintech Group brand and is not available to purchase from any other manufacturer.

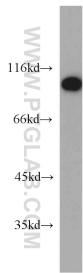
Selected Validation Data



Immunohistochemical analysis of paraffin-embedded human prostate cancer tissue slide using 55279-1-AP (CTAGE5 antibody) at dilution of 1:100 (under 10x lens). Heat mediated antigen retrieval with Tris-EDTA buffer (pH 9.0).



Immunohistochemical analysis of paraffin-embedded human prostate cancer tissue slide using 55279-1-AP (CTAGE5 antibody) at dilution of 1:100 (under 40x lens). Heat mediated antigen retrieval with Tris-EDTA buffer (pH 9.0).



human testis tissue were subjected to SDS PAGE followed by western blot with 55279-1-AP (CTAGE5 antibody) at dilution of 1:300 incubated at room temperature for 1.5 hours.