

For Research Use Only

CTAGE5 Polyclonal antibody, PBS Only

Catalog Number: 55279-1-PBS

Featured Product



Basic Information

Catalog Number:

55279-1-PBS

Size:

100ug, Concentration: 1 mg/ml by Nanodrop;

Source:

Rabbit

Isotype:

IgG

GenBank Accession Number:

NM_005930

GeneID (NCBI):

4253

UNIPROT ID:

Q96PC5

Full Name:

CTAGE family, member 5

Calculated MW:

92 kDa

Observed MW:

100-110 kDa

Purification Method:

Antigen affinity purification

Applications

Tested Applications:

WB, IHC, Indirect ELISA

Species Specificity:

human

Background Information

Cutaneous T cell lymphoma-associated antigen 5 (CTAGE5) is a member of the cTAGE family. CTAGE5 is a tumor-associated antigen and is overexpressed in various cancer cell lines. CTAGE5 consists of a signal anchor motif, a single transmembrane domain, two coiled-coil motifs, and a proline-rich domain (PRD) from the N-terminus. CTAGE5 interacts with TANGO1 through its second coil region to form a cargo receptor complex (PMID: 21525241). This antibody is specific to CTAGE5. It can recognize all the isoforms except isoform 5B.

Storage

Storage:

Store at -80°C.

Storage Buffer:

PBS only, pH7.3

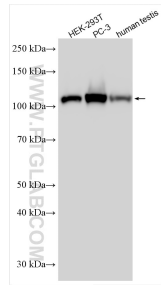
For technical support and original validation data for this product please contact:

T: 1 (888) 4PTGLAB (1-888-478-4522) (toll free in USA), or 1(312) 455-8498 (outside USA)

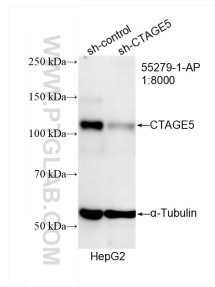
E: proteintech@ptglab.com
W: ptglab.com

This product is exclusively available under Proteintech Group brand and is not available to purchase from any other manufacturer.

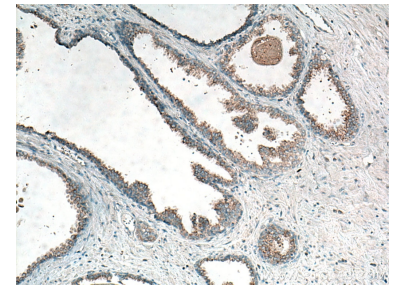
Selected Validation Data



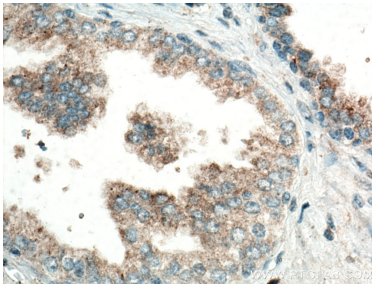
Various lysates were subjected to SDS PAGE followed by western blot with 55279-1-AP (CTAGE5 antibody) at dilution of 1:2500 incubated at room temperature for 1.5 hours. This data was developed using the same antibody clone with 55279-1-PBS in a different storage buffer formulation.



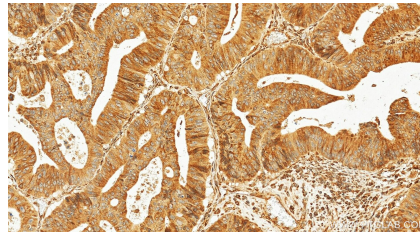
WB result of CTAGE5 antibody (55279-1-AP; 1:8000; incubated at room temperature for 1.5 hours) with sh-Control and sh-CTAGE5 transfected HepG2 cells. This data was developed using the same antibody clone with 55279-1-PBS in a different storage buffer formulation.



Immunohistochemical analysis of paraffin-embedded human prostate cancer tissue slide using 55279-1-AP (CTAGE5 antibody) at dilution of 1:100 (under 10x lens). Heat mediated antigen retrieval with Tris-EDTA buffer (pH 9.0). This data was developed using the same antibody clone with 55279-1-PBS in a different storage buffer formulation.



Immunohistochemical analysis of paraffin-embedded human prostate cancer tissue slide using 55279-1-AP (CTAGE5 antibody) at dilution of 1:100 (under 40x lens). Heat mediated antigen retrieval with Tris-EDTA buffer (pH 9.0). This data was developed using the same antibody clone with 55279-1-PBS in a different storage buffer formulation.



Immunohistochemical analysis of paraffin-embedded human colon cancer tissue slide using 55279-1-AP (CTAGE5 antibody) at dilution of 1:800 (under 20x lens). Heat mediated antigen retrieval with Tris-EDTA buffer (pH 9.0). This data was developed using the same antibody clone with 55279-1-PBS in a different storage buffer formulation.