

For Research Use Only

INSIG1 Polyclonal antibody, PBS Only

Catalog Number: 55282-1-PBS



Basic Information

Catalog Number:

55282-1-PBS

Size:

100ug, Concentration: 1 mg/ml by Nanodrop;

Source:

Rabbit

Isotype:

IgG

GenBank Accession Number:

NM_005542

GeneID (NCBI):

3638

UNIPROT ID:

O15503

Full Name:

insulin induced gene 1

Calculated MW:

30 kDa

Observed MW:

35 kDa

Purification Method:

Antigen affinity purification

Applications

Tested Applications:

WB, IHC, IF/ICC, Indirect ELISA

Species Specificity:

human, mouse, rat

Storage

Storage:

Store at -80°C.

Storage Buffer:

PBS Only

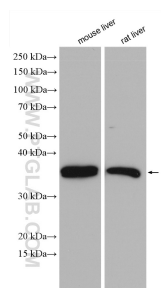
For technical support and original validation data for this product please contact:

T: 1 (888) 4PTGLAB (1-888-478-4522) (toll free in USA), or 1(312) 455-8498 (outside USA)

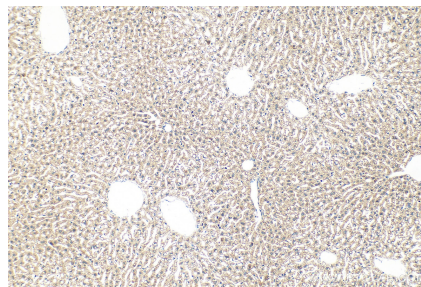
E: proteintech@ptglab.com
W: ptglab.com

This product is exclusively available under Proteintech Group brand and is not available to purchase from any other manufacturer.

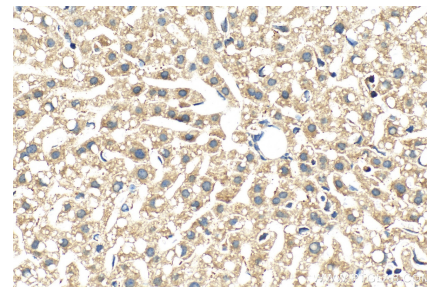
Selected Validation Data



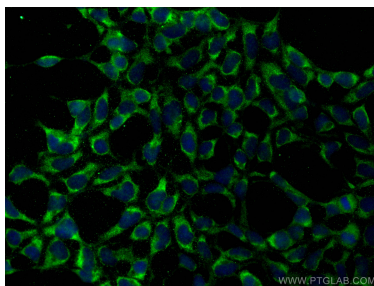
Various lysates were subjected to SDS PAGE followed by western blot with 55282-1-AP (INSIG1 antibody) at dilution of 1:3000 incubated at room temperature for 1.5 hours. This data was developed using the same antibody clone with 55282-1-PBS in a different storage buffer formulation.



Immunohistochemical analysis of paraffin-embedded mouse liver tissue slide using 55282-1-AP (INSIG1 antibody) at dilution of 1:500 (under 10x lens). Heat mediated antigen retrieval with Tris-EDTA buffer (pH 9.0). This data was developed using the same antibody clone with 55282-1-PBS in a different storage buffer formulation.



Immunohistochemical analysis of paraffin-embedded mouse liver tissue slide using 55282-1-AP (INSIG1 antibody) at dilution of 1:500 (under 40x lens). Heat mediated antigen retrieval with Tris-EDTA buffer (pH 9.0). This data was developed using the same antibody clone with 55282-1-PBS in a different storage buffer formulation.



Immunofluorescent analysis of (-20°C Ethanol) fixed HEK-293 cells using INSIG1 antibody (55282-1-AP) at dilution of 1:200 and CoraLite®488-Conjugated AffiniPure Goat Anti-Rabbit IgG(H+L) (SA00013-2). This data was developed using the same antibody clone with 55282-1-PBS in a different storage buffer formulation.