

For Research Use Only

# FKBP15 Polyclonal antibody

Catalog Number:55285-1-AP



## Basic Information

<b>Catalog Number:</b> 55285-1-AP	<b>GenBank Accession Number:</b> NM_015258	<b>Purification Method:</b> Antigen affinity purification
<b>Size:</b> 150ul , Concentration: 400 ug/ml by Nanodrop;	<b>GeneID (NCBI):</b> 23307	<b>Recommended Dilutions:</b> WB: 1:200-1:1000
<b>Source:</b> Rabbit	<b>UNIPROT ID:</b> Q5T1M5	
<b>Isotype:</b> IgG	<b>Full Name:</b> FK506 binding protein 15, 133kDa	
	<b>Calculated MW:</b> 134 kDa	
	<b>Observed MW:</b> 133-140 kDa	

## Applications

<b>Tested Applications:</b> WB, ELISA	<b>Positive Controls:</b> WB : HEK-293 cells, HeLa cells, PC-3 cells
<b>Species Specificity:</b> human, mouse	

## Background Information

FKBP15 (FK506-binding protein 15) is a member of the FKBP (FK506-binding protein) family, a group of highly conserved proteins characterized by their peptidyl-prolyl isomerase (PPIase) activity. These proteins play critical roles in protein folding, cellular signaling, and chaperone functions by catalyzing the cis-trans isomerization of proline residues in peptides and proteins.

## Storage

**Storage:**  
Store at -20°C. Stable for one year after shipment.  
**Storage Buffer:**  
PBS with 0.02% sodium azide and 50% glycerol, pH7.3  
Aliquoting is unnecessary for -20°C storage

\*\*\* 20ul sizes contain 0.1% BSA

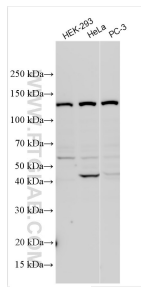
For technical support and original validation data for this product please contact:

T: 1 (888) 4PTGLAB (1-888-478-4522) (toll free in USA), or 1(312) 455-8498 (outside USA)

E: [proteintech@ptglab.com](mailto:proteintech@ptglab.com)  
W: [ptglab.com](http://ptglab.com)

This product is exclusively available under Proteintech Group brand and is not available to purchase from any other manufacturer.

## Selected Validation Data



Various lysates were subjected to SDS PAGE followed by western blot with 55285-1-AP (FKBP15 antibody) at dilution of 1:200 incubated at room temperature for 1.5 hours.