

For Research Use Only

Neurobeachin Polyclonal antibody

Catalog Number: 55287-1-AP



Basic Information

Catalog Number: 55287-1-AP	GenBank Accession Number: NM_015678	Purification Method: Antigen affinity purification
Size: 150ul , Concentration: 230 µg/ml by Nanodrop;	GeneID (NCBI): 26960	Recommended Dilutions: WB 1:500-1:1000
Source: Rabbit	Full Name: neurobeachin	
Isotype: IgG	Calculated MW: 328 kDa	
	Observed MW: 280-300 kDa	

Applications

Tested Applications: WB, ELISA	Positive Controls: WB : mouse brain tissue,
Species Specificity: human, mouse	

Background Information

Neurobeachin is a member of a large, diverse group of A-kinase anchor proteins that target the activity of protein kinase A to specific subcellular sites by binding to its type II regulatory subunits. Brain-specific expression and coat protein-like membrane recruitment of a highly similar protein in mouse suggest an involvement in neuronal post-Golgi membrane traffic. Mutations in this gene may be associated with a form of autism. This gene and its expression are frequently disrupted in patients with multiple myeloma.

Storage

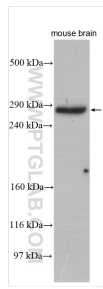
Storage:
Store at -20°C. Stable for one year after shipment.
Storage Buffer:
PBS with 0.02% sodium azide and 50% glycerol pH 7.3.
Aliquoting is unnecessary for -20°C storage

***** 20ul sizes contain 0.1% BSA**

For technical support and original validation data for this product please contact:
T: 1 (888) 4PTGLAB (1-888-478-4522) (toll free in USA), or 1(312) 455-8498 (outside USA) E: proteintech@ptglab.com W: ptglab.com

This product is exclusively available under Proteintech Group brand and is not available to purchase from any other manufacturer.

Selected Validation Data



mouse brain tissue were subjected to SDS PAGE followed by western blot with 55287-1-AP (Neurobeachin antibody) at dilution of 1:600 incubated at room temperature for 1.5 hours.