

For Research Use Only

ZGLP1 Polyclonal antibody

Catalog Number: 55292-1-AP

2 Publications



Basic Information

Catalog Number:

55292-1-AP

Size:

150ul, Concentration: 1000 ug/ml by Nanodrop and 400 ug/ml by Bradford method using BSA as the standard;

Source:

Rabbit

Isotype:

IgG

GenBank Accession Number:

NM_001103167

GeneID (NCBI):

100125288

UNIPROT ID:

POC6A0

Full Name:

GATA like protein-1

Calculated MW:

30 kDa

Observed MW:

30 kDa

Purification Method:

Antigen affinity purification

Recommended Dilutions:

WB 1:200-1:1000

IHC 1:20-1:200

Applications

Tested Applications:

WB, IHC, ELISA

Cited Applications:

IHC

Species Specificity:

human, mouse

Cited Species:

mouse

Positive Controls:

WB : mouse ovary tissue,

IHC : human ovary tissue,

Note-IHC: suggested antigen retrieval with TE buffer pH 9.0; (*) Alternatively, antigen retrieval may be performed with citrate buffer pH 6.0

Background Information

ZGLP1, also known as GLP-1, is a nuclear protein containing two zinc fingers, one of which is highly homologous to the conserved GATA zinc finger DNA binding motif. It is a transcriptional repressor that plays a central role in somatic cells of the gonad and is required for germ cell development.

Notable Publications

Author	Pubmed ID	Journal	Application
Wen-Bin Wu	39551849	Chin J Integr Med	IHC
Wenbin Wu	37469873	Front Pharmacol	IHC

Storage

Storage:

Store at -20°C.

Storage Buffer:

PBS with 0.02% sodium azide and 50% glycerol pH 7.3.

Aliquoting is unnecessary for -20°C storage

*** 20ul sizes contain 0.1% BSA

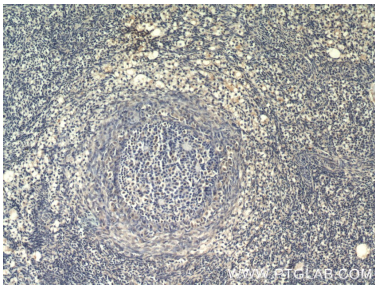
For technical support and original validation data for this product please contact:

T: 1 (888) 4PTGLAB (1-888-478-4522) (toll free in USA), or 1(312) 455-8498 (outside USA)

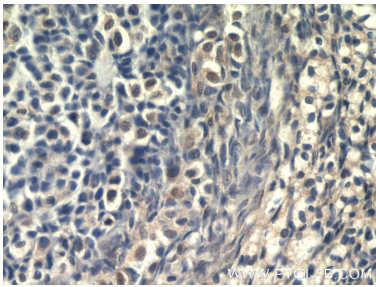
E: proteintech@ptglab.com
W: ptglab.com

This product is exclusively available under Proteintech Group brand and is not available to purchase from any other manufacturer.

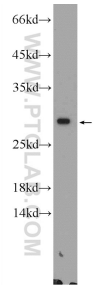
Selected Validation Data



Immunohistochemical analysis of paraffin-embedded human ovary using 55292-1-AP (GLP1 antibody) at dilution of 1:50 (under 10x lens).



Immunohistochemical analysis of paraffin-embedded human ovary using 55292-1-AP (GLP1 antibody) at dilution of 1:50 (under 40x lens).



mouse ovary tissue were subjected to SDS PAGE followed by western blot with 55292-1-AP (ZGLP1 Antibody) at dilution of 1:300 incubated at room temperature for 1.5 hours.