

For Research Use Only

# LIMS2 Polyclonal antibody

Catalog Number: 55300-1-AP



## Basic Information

**Catalog Number:**

55300-1-AP

**Size:**

150ul , Concentration: 650 ug/ml by Nanodrop;

**Source:**

Rabbit

**Isotype:**

IgG

**GenBank Accession Number:**

NM\_017980

**GeneID (NCBI):**

55679

**UNIPROT ID:**

Q7Z4I7

**Full Name:**

LIM and senescent cell antigen-like domains 2

**Calculated MW:**

39 kDa

**Observed MW:**

35-40 kDa

**Purification Method:**

Antigen affinity purification

**Recommended Dilutions:**

WB 1:2000-1:16000

## Applications

**Tested Applications:**

WB, ELISA

**Species Specificity:**

human, mouse, rat

**Positive Controls:**

WB : human placenta tissue, mouse bladder tissue, rat bladder tissue

## Background Information

LIMS2, also known as PINCH2, is a member of a small family of focal adhesion proteins. LIMS2 contains five LIM domains, each domain forming two zinc fingers, which permit interactions that regulate cell shape and migration. Along with integrin-linked kinase and parvin, LIMS2 is a component of a complex that mediates multiple protein-protein interactions at adhesion sites between cells and the extracellular matrix (ECM) (PMID: 12167643). Mutations in LIMS2 are associated with a novel muscular dystrophy, severe cardiomyopathy and triangular tongues (PMID: 25589244).

## Storage

**Storage:**

Store at -20°C. Stable for one year after shipment.

**Storage Buffer:**

PBS with 0.02% sodium azide and 50% glycerol pH 7.3.

Aliquoting is unnecessary for -20°C storage

\*\*\* 20ul sizes contain 0.1% BSA

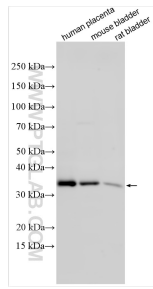
For technical support and original validation data for this product please contact:

T: 1 (888) 4PTGLAB (1-888-478-4522) (toll free in USA), or 1(312) 455-8498 (outside USA)

E: [proteintech@ptglab.com](mailto:proteintech@ptglab.com)  
W: [ptglab.com](http://ptglab.com)

This product is exclusively available under Proteintech Group brand and is not available to purchase from any other manufacturer.

## Selected Validation Data



Various lysates were subjected to SDS PAGE followed by western blot with 55300-1-AP (LIMS2 antibody) at dilution of 1:8000 incubated at room temperature for 1.5 hours.