

For Research Use Only

MAT2A Polyclonal antibody

Catalog Number: 55309-1-AP

Featured Product

16 Publications



Basic Information

Catalog Number:

55309-1-AP

Size:

150ul, Concentration: 800 ug/ml by Nanodrop;

Source:

Rabbit

Isotype:

IgG

GenBank Accession Number:

NM_005911

GeneID (NCBI):

4144

UNIPROT ID:

P31153

Full Name:

methionine adenosyltransferase II, alpha

Calculated MW:

44 kDa

Observed MW:

45-50 kDa

Purification Method:

Antigen affinity purification

Recommended Dilutions:

WB 1:1000-1:4000

IP 0.5-4.0 ug for 1.0-3.0 mg of total protein lysate

IHC 1:50-1:500

IF/ICC 1:50-1:500

Applications

Tested Applications:

WB, IHC, IF/ICC, IP, ELISA

Cited Applications:

WB, IHC, IF

Species Specificity:

human, mouse

Cited Species:

human, mouse, rat, pig

Note-IHC: suggested antigen retrieval with TE buffer pH 9.0; (*) Alternatively, antigen retrieval may be performed with citrate buffer pH 6.0

Positive Controls:

WB : HEK-293 cells, HeLa cells, HepG2 cells, Jurkat cells, SGC-7901 cells, NIH/3T3 cells

IP : HepG2 cells,

IHC : human stomach cancer tissue,

IF/ICC : HeLa cells,

Background Information

MAT2A, also named as AMS2, MATA2 and AdoMet synthase 2, belongs to the AdoMet synthase family. It catalyzes the formation of S-adenosylmethionine from methionine and ATP. This antibody is specific to MATA2.

Notable Publications

Author	Pubmed ID	Journal	Application
Menghui Xu	36290677	Antioxidants (Basel)	WB
Chelsea Hepler	36264811	Science	WB
Li Chen	33948996	FASEB J	WB

Storage

Storage:

Store at -20°C. Stable for one year after shipment.

Storage Buffer:

PBS with 0.02% sodium azide and 50% glycerol, pH7.3

Aliquoting is unnecessary for -20°C storage

*** 20ul sizes contain 0.1% BSA

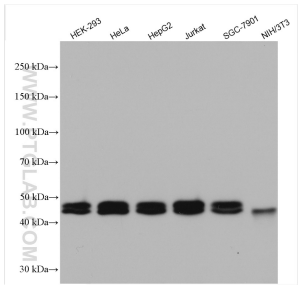
For technical support and original validation data for this product please contact:

T: 1 (888) 4PTGLAB (1-888-478-4522) (toll free in USA), or 1(312) 455-8498 (outside USA)

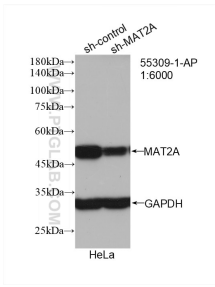
E: proteintech@ptglab.com
W: ptglab.com

This product is exclusively available under Proteintech Group brand and is not available to purchase from any other manufacturer.

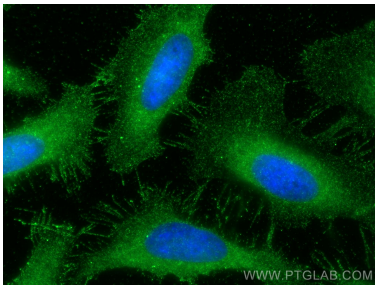
Selected Validation Data



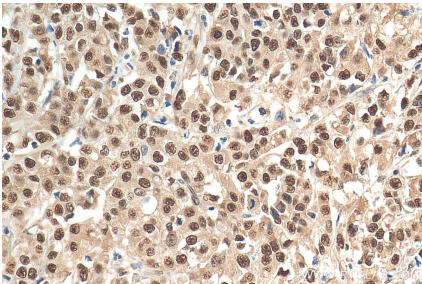
Various lysates were subjected to SDS PAGE followed by western blot with 55309-1-AP (MAT2A antibody) at dilution of 1:2000 incubated at room temperature for 1.5 hours.



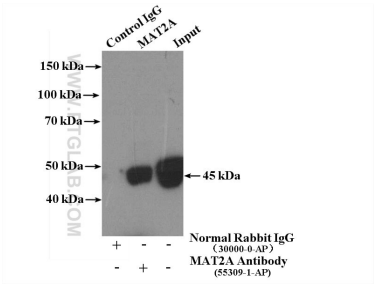
WB result of MAT2A antibody (55309-1-AP; 1:6000; incubated at room temperature for 1.5 hours) with sh-control and sh-MAT2A transfected HeLa cells.



Immunofluorescent analysis of (-20°C Methanol) fixed HeLa cells using MAT2A antibody (55309-1-AP) at dilution of 1:200 and CoraLite®488-Conjugated AffiniPure Goat Anti-Rabbit IgG(H+L).



Immunohistochemical analysis of paraffin-embedded human stomach cancer tissue slide using 55309-1-AP (MAT2A antibody) at dilution of 1:200 (under 40x lens). Heat mediated antigen retrieval with Tris-EDTA buffer (pH 9.0).



IP result of anti-MAT2A (IP:55309-1-AP, 4µg; Detection:55309-1-AP 1:500) with HepG2 cells lysate 3200µg.