

For Research Use Only

PAMR1 Polyclonal antibody

Catalog Number: 55310-1-AP **2 Publications**



Basic Information

Catalog Number: 55310-1-AP	GenBank Accession Number: NM_015430	Purification Method: Antigen affinity purification
Size: 150ul , Concentration: 400 µg/ml by Nanodrop and 240 µg/ml by Bradford method using BSA as the standard;	GeneID (NCBI): 25891	Recommended Dilutions: WB 1:500-1:1000 IHC 1:20-1:200
Source: Rabbit	Full Name: regeneration associated muscle protease	
Isotype: IgG	Calculated MW: 82 kDa	
	Observed MW: 78-82 kDa, 67-70 kDa	

Applications

Tested Applications: IHC, WB, ELISA	Positive Controls:
Cited Applications: IHC, WB	WB : mouse skeletal muscle tissue,
Species Specificity: human, mouse, rat	IHC : human skeletal muscle tissue,
Cited Species: human, mouse	

Note-IHC: suggested antigen retrieval with TE buffer pH 9.0; (*) Alternatively, antigen retrieval may be performed with citrate buffer pH 6.0

Background Information

PAMR1, also named as RAMP, belongs to the peptidase S1 family. It may play a role in regeneration of skeletal muscle. This antibody is specific to PAMR1.

Notable Publications

Author	Pubmed ID	Journal	Application
Mark S Cembrowski	30375971	Elife	IHC
Rui Yang	34671559	Front Oncol	WB, IHC

Storage

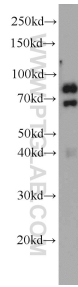
Storage:
Store at -20°C.
Storage Buffer:
PBS with 0.02% sodium azide and 50% glycerol pH 7.3.
Aliquoting is unnecessary for -20°C storage

***** 20ul sizes contain 0.1% BSA**

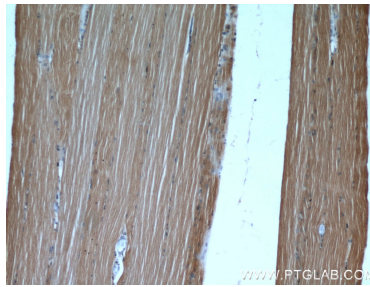
For technical support and original validation data for this product please contact:
T: 1 (888) 4PTGLAB (1-888-478-4522) (toll free in USA), or 1(312) 455-8498 (outside USA)
E: proteintech@ptglab.com
W: ptglab.com

This product is exclusively available under Proteintech Group brand and is not available to purchase from any other manufacturer.

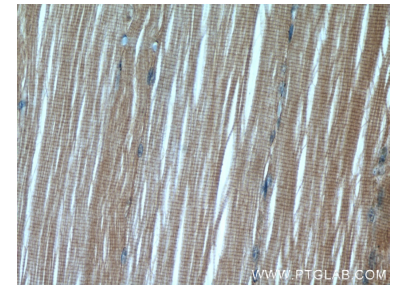
Selected Validation Data



mouse skeletal muscle tissue were subjected to SDS PAGE followed by western blot with 55310-1-AP (PAMR1 antibody) at dilution of 1:500 incubated at room temperature for 1.5 hours.



Immunohistochemical analysis of paraffin-embedded human skeletal muscle using 55310-1-AP (PAMR1 antibody) at dilution of 1:50 (under 10x lens).



Immunohistochemical analysis of paraffin-embedded human skeletal muscle using 55310-1-AP (PAMR1 antibody) at dilution of 1:50 (under 40x lens).