

For Research Use Only

ATP6 Polyclonal antibody

Catalog Number: 55313-1-AP

55 Publications



Basic Information

Catalog Number:

55313-1-AP

Size:

150ul, Concentration: 650 ug/ml by Nanodrop;

Source:

Rabbit

Isotype:

IgG

GenBank Accession Number:

J01415

GeneID (NCBI):

4508

Full Name:

ATP synthase 6; ATPase subunit 6

Calculated MW:

25 kDa

Observed MW:

25-30 kDa

Purification Method:

Antigen affinity purification

Recommended Dilutions:

WB 1:500-1:1000

Applications

Tested Applications:

WB, ELISA

Cited Applications:

WB, IHC, IF

Species Specificity:

human, mouse, rat

Cited Species:

human, mouse, rat

Positive Controls:

WB : mouse brain tissue, C2C12 cells, rat brain

Background Information

ATP synthase, also known as FoF1 complex, is a critical mitochondrial OXPHOS enzyme involved in the regulation of mitochondrial ATP production and in the maintenance of the mitochondrial membrane potential. It is composed of three components (F1, Fo and the peripheral stalk). F1, the soluble catalytic core, is above the membrane, inside the matrix of the mitochondria; consists of 5 different subunits (alpha, beta, gamma, delta, and epsilon); Fo, comprising the proton channel, is within the membrane; Fo seems to have nine subunits (a, b, c, d, e, f, g, F6 and 8). ATP6 is the a subunit of Fo region.

Notable Publications

Author	Pubmed ID	Journal	Application
Uwe Richter	30262910	Nat Commun	WB
Zhiyuan Tian	36269211	Toxicol Sci	WB
Dongfang Hu	29051574	Sci Rep	WB

Storage

Storage:

Store at -20°C. Stable for one year after shipment.

Storage Buffer:

PBS with 0.02% sodium azide and 50% glycerol pH 7.3.

Aliquoting is unnecessary for -20°C storage

*** 20ul sizes contain 0.1% BSA

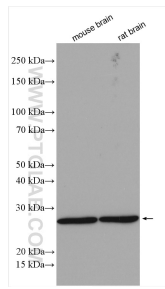
For technical support and original validation data for this product please contact:

T: 1 (888) 4PTGLAB (1-888-478-4522) (toll free in USA), or 1(312) 455-8498 (outside USA)

E: proteintech@ptglab.com
W: ptglab.com

This product is exclusively available under Proteintech Group brand and is not available to purchase from any other manufacturer.

Selected Validation Data



Various lysates were subjected to SDS PAGE followed by western blot with 55313-1-AP (ATP6 antibody) at dilution of 1:800 incubated at room temperature for 1.5 hours.