

For Research Use Only

TAL1 Polyclonal antibody

Catalog Number: 55317-1-AP **1 Publications**



Basic Information

Catalog Number: 55317-1-AP	GenBank Accession Number: NM_003189	Purification Method: Antigen affinity purification
Size: 150ul , Concentration: 600 µg/ml by Nanodrop and 273 µg/ml by Bradford method using BSA as the standard;	GeneID (NCBI): 6886	Recommended Dilutions: WB 1:500-1:2000
Source: Rabbit	Full Name: T-cell acute lymphocytic leukemia 1	IP 0.5-4.0 ug for IP and 1:500-1:2000 for WB
Isotype: IgG	Calculated MW: 34 kDa	
	Observed MW: 40-44 kDa	

Applications

Tested Applications: IP, WB, ELISA	Positive Controls: WB : Raji cells, Jurkat cells
Cited Applications: WB	IP : Raji cells,
Species Specificity: human, mouse	
Cited Species: human	

Background Information

T-cell acute lymphocytic leukemia protein 1 (TAL1) also named Stem cell protein, T-cell leukemia/lymphoma protein 5. It is specifically expressed in leukemic stem cell, implicated in the genesis of hemopoietic malignancies. It may play an important role in hemopoietic differentiation, serving as a positive regulator of erythroid differentiation. The 38kd, 44kd bands recognized by antibody are the phosphorylated forms of TAL1 and its isoforms.

Notable Publications

Author	Pubmed ID	Journal	Application
Xin Yang	36297316	Pharmaceuticals (Basel)	WB

Storage

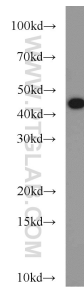
Storage:
Store at -20°C.
Storage Buffer:
PBS with 0.02% sodium azide and 50% glycerol pH 7.3.
Aliquoting is unnecessary for -20°C storage

***** 20ul sizes contain 0.1% BSA**

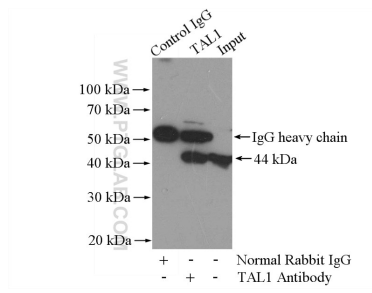
For technical support and original validation data for this product please contact:
T: 1 (888) 4PTGLAB (1-888-478-4522) (toll free in USA), or 1(312) 455-8498 (outside USA)
E: proteintech@ptglab.com
W: ptglab.com

This product is exclusively available under Proteintech Group brand and is not available to purchase from any other manufacturer.

Selected Validation Data



Raji cells were subjected to SDS PAGE followed by western blot with 55317-1-AP (TAL1 antibody) at dilution of 1:1000 incubated at room temperature for 1.5 hours.



IP Result of anti-TAL1 (IP:55317-1-AP, 4ug; Detection:55317-1-AP 1:1000) with Raji cells lysate 2000ug.