

For Research Use Only

SH2D5 Polyclonal antibody, PBS Only

Catalog Number:55320-1-PBS



Basic Information

Catalog Number: 55320-1-PBS	GenBank Accession Number: NM_001103160	Purification Method: Antigen affinity purification
Size: 100ug , Concentration: 1 mg/ml by Nanodrop;	GeneID (NCBI): 400745	
Source: Rabbit	UNIPROT ID: Q6ZV89	
Isotype: IgG	Full Name: SH2 domain containing 5	
	Calculated MW: 37 kDa	
	Observed MW: 43-47 kDa	

Applications

Tested Applications:
WB, IHC, IF/ICC, Indirect ELISA

Species Specificity:
human, mouse

Background Information

SH2D5, or Src homology 2 domain-containing protein 5, is a mammalian-specific adaptor-like protein that contains an N-terminal phosphotyrosine-binding domain and a C-terminal Src homology 2 (SH2) domain. SH2D5 has been found to interact with the breakpoint cluster region protein, a RacGAP that is also highly expressed in the brain. This interaction occurs between the phosphotyrosine-binding domain of SH2D5 and an NxxF motif located within the N-terminal region of the breakpoint cluster region. Furthermore, SH2D5 has been implicated in the regulation of cell growth in hepatocellular carcinoma cells, where it binds to transketolase (TKT) and promotes the activity of STAT3, a key transcription factor involved in cell proliferation and survival.

Storage

Storage:
Store at -80°C.

Storage Buffer:
PBS Only

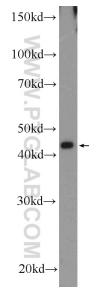
For technical support and original validation data for this product please contact:

T: 1 (888) 4PTGLAB (1-888-478-4522) (toll free in USA), or 1(312) 455-8498 (outside USA)

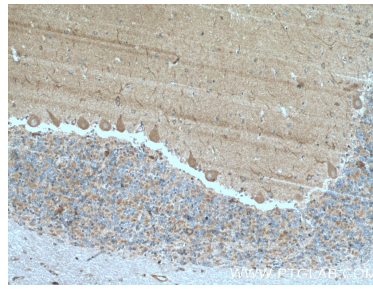
E: proteintech@ptglab.com
W: ptglab.com

This product is exclusively available under Proteintech Group brand and is not available to purchase from any other manufacturer.

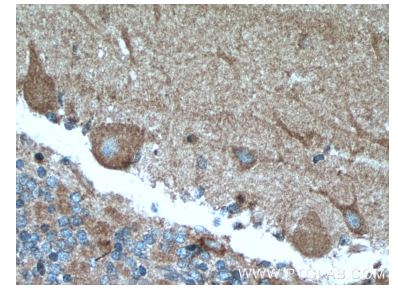
Selected Validation Data



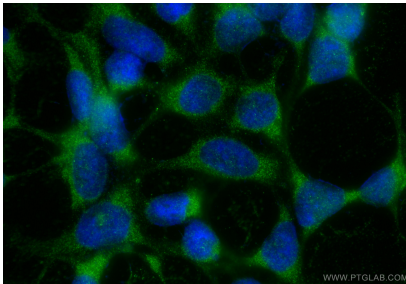
HEK-293 cells were subjected to SDS PAGE followed by western blot with 55320-1-AP (SH2D5 Antibody) at dilution of 1:300 incubated at room temperature for 1.5 hours. This data was developed using the same antibody clone with 55320-1-PBS in a different storage buffer formulation.



Immunohistochemical analysis of paraffin-embedded human cerebellum tissue slide using 55320-1-AP (SH2D5 antibody) at dilution of 1:200 (under 10x lens. Heat mediated antigen retrieval with Tris-EDTA buffer (pH 9.0). This data was developed using the same antibody clone with 55320-1-PBS in a different storage buffer formulation.



Immunohistochemical analysis of paraffin-embedded human cerebellum tissue slide using 55320-1-AP (SH2D5 antibody) at dilution of 1:200 (under 40x lens. Heat mediated antigen retrieval with Tris-EDTA buffer (pH 9.0). This data was developed using the same antibody clone with 55320-1-PBS in a different storage buffer formulation.



Immunofluorescent analysis of (-20°C Ethanol) fixed HEK-293 cells using SH2D5 antibody (55320-1-AP) at dilution of 1:200 and CoraLite®488-Conjugated Goat Anti-Rabbit IgG(H+L) (SA00013-2). This data was developed using the same antibody clone with 55320-1-PBS in a different storage buffer formulation.