

For Research Use Only

QSER1 Polyclonal antibody

Catalog Number:55326-1-AP



Basic Information

| | | |
|--|--|---|
| Catalog Number: 55326-1-AP | GenBank Accession Number: NM_001076786 | Purification Method: Antigen affinity purification |
| Size: 150ul , Concentration: 1400 ug/ml by Nanodrop; | GeneID (NCBI): 79832 | Recommended Dilutions: IHC: 1:50-1:500 IF/ICC: 1:200-1:800 |
| Source: Rabbit | UNIPROT ID: Q2KHR3 | |
| Isotype: IgG | Full Name: glutamine and serine rich 1 | |
| | Calculated MW: 190 kDa | |

Applications

| | |
|---|--|
| Tested Applications: IHC, IF/ICC, ELISA | Positive Controls: IHC : human pancreas cancer tissue, IF/ICC : HeLa cells, |
| Species Specificity: human | |

Note-IHC: suggested antigen retrieval with TE buffer pH 9.0; (*) Alternatively, antigen retrieval may be performed with citrate buffer pH 6.0

Background Information

QSER1, a recently characterized protein, whose activity has been tightly associated with the protection of DNA methylation sites in hESCs. QSER1 is widely up-regulated in multiple cancers, and its up-regulation correlates with poor clinic outcomes (PMID: 36371602). QSER1 depletion leads to NODAL de-repression and associates with increased RNA Polymerase II occupancy at YAP1bound enhancers, pointing to a QSER1 contribution maintaining low transcriptional activity on certain genomic regions (PMID: 33833093, 35210841).

Storage

Storage:
Store at -20°C. Stable for one year after shipment.
Storage Buffer:
PBS with 0.02% sodium azide and 50% glycerol, pH7.3
Aliquoting is unnecessary for -20°C storage

*** 20ul sizes contain 0.1% BSA

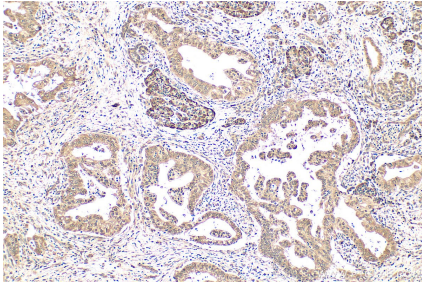
For technical support and original validation data for this product please contact:

T: 1 (888) 4PTGLAB (1-888-478-4522) (toll free in USA), or 1(312) 455-8498 (outside USA)

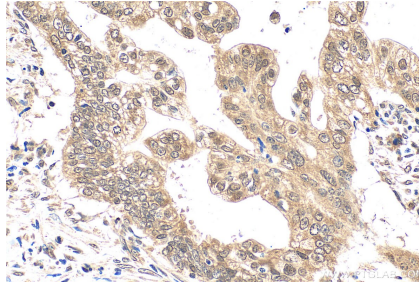
E: proteintech@ptglab.com
W: ptglab.com

This product is exclusively available under Proteintech Group brand and is not available to purchase from any other manufacturer.

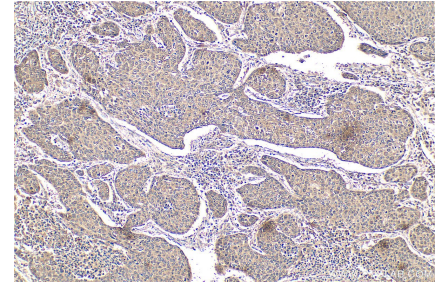
Selected Validation Data



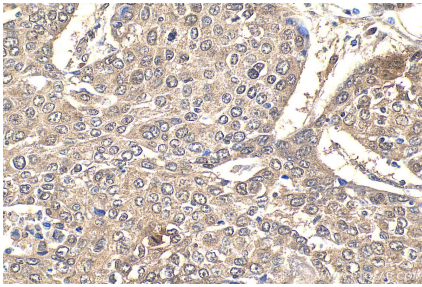
Immunohistochemical analysis of paraffin-embedded human pancreas cancer tissue slide using 55326-1-AP (QSER1 antibody) at dilution of 1:200 (under 10x lens). Heat mediated antigen retrieval with Tris-EDTA buffer (pH 9.0).



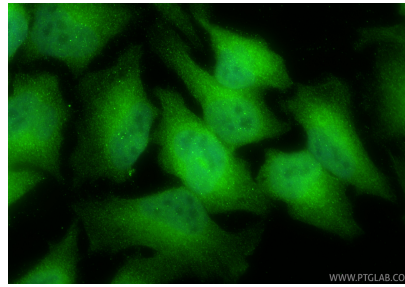
Immunohistochemical analysis of paraffin-embedded human pancreas cancer tissue slide using 55326-1-AP (QSER1 antibody) at dilution of 1:200 (under 40x lens). Heat mediated antigen retrieval with Tris-EDTA buffer (pH 9.0).



Immunohistochemical analysis of paraffin-embedded human lung cancer tissue slide using 55326-1-AP (QSER1 antibody) at dilution of 1:600 (under 10x lens). Heat mediated antigen retrieval with Tris-EDTA buffer (pH 9.0).



Immunohistochemical analysis of paraffin-embedded human lung cancer tissue slide using 55326-1-AP (QSER1 antibody) at dilution of 1:600 (under 40x lens). Heat mediated antigen retrieval with Tris-EDTA buffer (pH 9.0).



Immunofluorescent analysis of (4% PFA) fixed HeLa cells using QSER1 antibody (55326-1-AP) at dilution of 1:400 and CoraLite@488-Conjugated Goat Anti-Rabbit IgG(H+L) (SA00013-2).