

Involucrin Polyclonal antibody

Catalog Number: 55328-1-AP

19 Publications

Basic Information

Catalog Number:

55328-1-AP

Size:

150ul, Concentration: 133 µg/ml by Bradford method using BSA as the standard;

Source:

Rabbit

Isotype:

IgG

GenBank Accession Number:

NM_005547

GeneID (NCBI):

3713

UNIPROT ID:

P07476

Full Name:

involucrin

Calculated MW:

69 kDa

Observed MW:

80-90 kDa, 56-70 kDa

Purification Method:

Antigen affinity purification

Recommended Dilutions:

WB 1:500-1:1000

IHC 1:50-1:500

Applications

Tested Applications:

WB, IF, IHC, ELISA

Cited Applications:

WB, IF, IHC

Species Specificity:

human, mouse

Cited Species:

human, mouse

Note-IHC: suggested antigen retrieval with TE buffer pH 9.0; (*) Alternatively, antigen retrieval may be performed with citrate buffer pH 6.0

Positive Controls:

WB: Raji cells, NIH/3T3 cells

IHC: human skin cancer tissue, human thymus tissue, human oesophagus tissue

Background Information

Involucrin is a protein precursor of the epidermal cornified envelope that is assembled in the outermost layers of the epidermis. Involucrin expression is restricted to the suprabasal epidermal layers (spinous and granular layers) during normal keratinocyte differentiation and is a useful marker of terminal differentiation. The predicted MW of involucrin is 68 kDa, while different reports provided variable results ranging from 90-140 kDa. (PMID: 11099111, 1503502)

Notable Publications

Author	Pubmed ID	Journal	Application
Lisa Lemoine	34579573	mBio	IF
Yuan Mu	26500069	Mol Med Rep	WB
Shidi Wu	31790685	Life Sci	IHC

Storage

Storage:

Store at -20°C.

Storage Buffer:

PBS with 0.02% sodium azide and 50% glycerol pH 7.3.

Aliquoting is unnecessary for -20°C storage

*** 20ul sizes contain 0.1% BSA

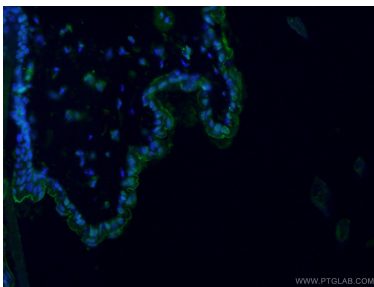
For technical support and original validation data for this product please contact:

T: 1 (888) 4PTGLAB (1-888-478-4522) (toll free in USA), or 1(312) 455-8498 (outside USA)

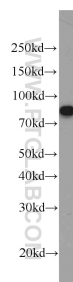
E: proteintech@ptglab.com
W: ptglab.com

This product is exclusively available under Proteintech Group brand and is not available to purchase from any other manufacturer.

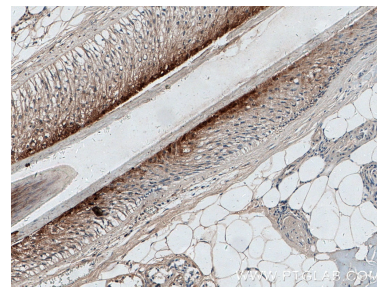
Selected Validation Data



Immunofluorescent analysis of (4% PFA) fixed mouse skin tissue using 55328-1-AP (Involucrin antibody) at dilution of 1:50 and Alexa Fluor 488-Conjugated AffiniPure Goat Anti-Rabbit IgG(H+L).



Raji cells were subjected to SDS PAGE followed by western blot with 55328-1-AP (IVL antibody) at dilution of 1:500 incubated at room temperature for 1.5 hours.



Immunohistochemical analysis of paraffin-embedded human skin cancer tissue slide using 55328-1-AP (Involucrin antibody) at dilution of 1:200 (under 10x lens).