

For Research Use Only

CHRNE Polyclonal antibody

Catalog Number: 55360-1-AP



Basic Information

Catalog Number: 55360-1-AP	GenBank Accession Number: NM_000080	Purification Method: Antigen affinity purification
Size: 150ul , Concentration: 600 µg/ml by Nanodrop and 533 µg/ml by Bradford method using BSA as the standard;	GeneID (NCBI): 1145	Recommended Dilutions: WB 1:500-1:1000
Source: Rabbit	Full Name: cholinergic receptor, nicotinic, epsilon	
Isotype: IgG	Calculated MW: 55 kDa	
	Observed MW: 40-50 kDa	

Applications

Tested Applications: WB, ELISA	Positive Controls: WB : mouse heart tissue, rat heart tissue
Species Specificity: mouse, rat	

Background Information

Acetylcholine receptor subunit epsilon is a protein that in humans is encoded by the CHRNE gene. Acetylcholine receptors at mature mammalian neuromuscular junctions are pentameric protein complexes composed of four subunits in the ratio of two alpha subunits to one beta, one epsilon, and one delta subunit. The acetylcholine receptor changes subunit composition shortly after birth when the epsilon subunit replaces the gamma subunit seen in embryonic receptors. Mutations in the epsilon subunit are associated with congenital myasthenic syndrome.

Storage

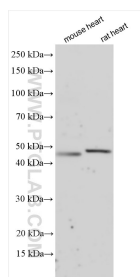
Storage:
Store at -20°C. Stable for one year after shipment.
Storage Buffer:
PBS with 0.02% sodium azide and 50% glycerol pH 7.3.
Aliquoting is unnecessary for -20°C storage

*** 20ul sizes contain 0.1% BSA

For technical support and original validation data for this product please contact:
T: 1 (888) 4PTGLAB (1-888-478-4522) (toll free in USA), or 1(312) 455-8498 (outside USA)
E: proteintech@ptglab.com
W: ptglab.com

This product is exclusively available under Proteintech Group brand and is not available to purchase from any other manufacturer.

Selected Validation Data



Various lysates were subjected to SDS PAGE followed by western blot with 55360-1-AP (CHRNE antibody) at dilution of 1:800 incubated at room temperature for 1.5 hours.