

For Research Use Only

# SETD2 Polyclonal antibody

Catalog Number: 55377-1-AP

Featured Product

5 Publications



## Basic Information

<b>Catalog Number:</b> 55377-1-AP	<b>GenBank Accession Number:</b> NM_014159	<b>Purification Method:</b> Antigen affinity purification
<b>Size:</b> 150ul, Concentration: 700 µg/ml by Nanodrop;	<b>GeneID (NCBI):</b> 29072	<b>Recommended Dilutions:</b> WB 1:500-1:1000 IHC 1:50-1:500 IF 1:20-1:200
<b>Source:</b> Rabbit	<b>Full Name:</b> SET domain containing 2	
<b>Isotype:</b> IgG	<b>Calculated MW:</b> 288 kDa	
	<b>Observed MW:</b> 287 kDa	

## Applications

### Tested Applications:

IF, IHC, WB, ELISA

### Cited Applications:

ColP, IHC, WB

### Species Specificity:

human

### Cited Species:

human, mouse

**Note-IHC: suggested antigen retrieval with TE buffer pH 9.0; (\*) Alternatively, antigen retrieval may be performed with citrate buffer pH 6.0**

### Positive Controls:

WB: Jurkat cells, U2OS cells, K-562 cells

IHC: human colon cancer tissue, human oesophagus cancer tissue

IF: HepG2 cells,

## Background Information

SETD2, also named as HIF1, HYPB, KIAA1732, KMT3A, SET2, p231HBP, hSET2 and HIP-1, belongs to the histone-lysine methyltransferase family and SET2 subfamily. It is a histone methyltransferase that methylates 'Lys-36' of histone H3. SETD2 probably plays a role in chromatin structure modulation during elongation via its interaction with hyperphosphorylated POLR2A. It binds DNA at promoters. SETD2 may also act as a transcription activator that binds to promoters.(PMID:16118227) It is a potential tumour suppressor gene in breast cancer.(PMID:20944102) This antibody is specific to SETD2.

## Notable Publications

Author	Pubmed ID	Journal	Application
Ruiqiong Liu	29846670	Nucleic Acids Res	WB
Jie Gao	30052810	Carcinogenesis	
Wentao Liu	35081978	J Exp Clin Cancer Res	WB

## Storage

### Storage:

Store at -20°C. Stable for one year after shipment.

### Storage Buffer:

PBS with 0.02% sodium azide and 50% glycerol pH 7.3.

Aliquoting is unnecessary for -20°C storage

\*\*\* 20ul sizes contain 0.1% BSA

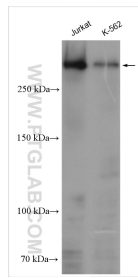
For technical support and original validation data for this product please contact:

T: 1 (888) 4PTGLAB (1-888-478-4522) (toll free in USA), or 1(312) 455-8498 (outside USA)

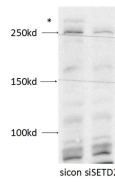
E: proteintech@ptglab.com  
W: ptglab.com

This product is exclusively available under Proteintech Group brand and is not available to purchase from any other manufacturer.

## Selected Validation Data

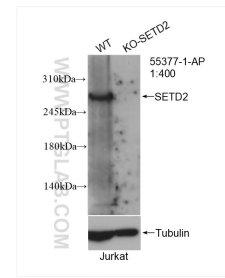


Various lysates were subjected to SDS PAGE followed by western blot with 55377-1-AP (SETD2 antibody) at dilution of 1:500 incubated at room temperature for 1.5 hours.

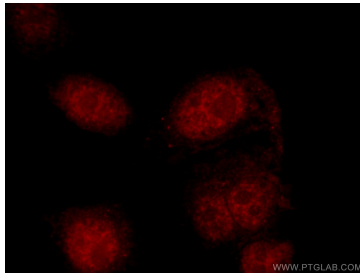


Negative control or SETD2 specific siRNAs were transfected into U2-OS cells with the final concentration of 20 nM. Forty eight hours after transfection, cells were lysed with RIPA buffer and subjected to SDS PAGE. The antibody dilution used for western blot was 1:500.

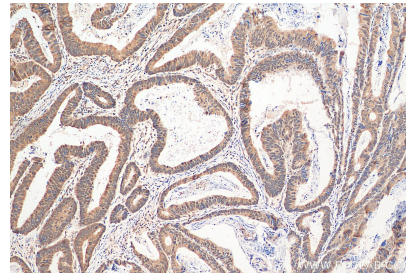
WB result of SETD2 antibody (55377-1-AP, 1:500) with siRNA transfected U2-OS cells.



WB result of SETD2 antibody (55377-1-AP; 1:400; room temperature for 1.5 hours) with wild-type and SETD2 knockout Jurkat cells.



Immunofluorescent analysis of HepG2 cells using 55377-1-AP (SETD2 antibody) at dilution of 1:50 and Rhodamine-Goat anti-Rabbit IgG.



Immunohistochemical analysis of paraffin-embedded human colon cancer tissue slide using 55377-1-AP (SETD2 antibody) at dilution of 1:200 (under 10x lens). Heat mediated antigen retrieval with Tris-EDTA buffer (pH 9.0).