

For Research Use Only

# PRKACB Polyclonal antibody

Catalog Number: 55382-1-AP **17 Publications**



## Basic Information

<b>Catalog Number:</b> 55382-1-AP	<b>GenBank Accession Number:</b> NM_002731	<b>Purification Method:</b> Antigen affinity purification
<b>Size:</b> 150ul , Concentration: 400 µg/ml by Nanodrop;	<b>GeneID (NCBI):</b> 5567	<b>Recommended Dilutions:</b> WB 1:500-1:1000 IHC 1:20-1:200
<b>Source:</b> Rabbit	<b>Full Name:</b> protein kinase, cAMP-dependent, catalytic, beta	
<b>Isotype:</b> IgG	<b>Calculated MW:</b> 46 kDa	
	<b>Observed MW:</b> 36-55 kDa	

## Applications

<b>Tested Applications:</b> IHC, WB, ELISA	<b>Positive Controls:</b>
<b>Cited Applications:</b> IHC, WB	WB : mouse brain tissue, human brain tissue
<b>Species Specificity:</b> human, mouse, rat	IHC : human kidney tissue,
<b>Cited Species:</b> human, rat, mouse	

**Note-IHC: suggested antigen retrieval with TE buffer pH 9.0; (\*) Alternatively, antigen retrieval may be performed with citrate buffer pH 6.0**

## Background Information

PRKACB, also named as PKA C-beta, belongs to the protein kinase superfamily. AGC Ser/Thr protein kinase family and cAMP subfamily. It mediates cAMP-dependent signaling triggered by receptor binding to GPCRs. PKA activation regulates diverse cellular processes such as cell proliferation, the cell cycle, differentiation and regulation of microtubule dynamics, chromatin condensation and decondensation, nuclear envelope disassembly and reassembly, as well as regulation of intracellular transport mechanisms and ion flux. This antibody is specific to PRKACB.

## Notable Publications

Author	Pubmed ID	Journal	Application
Qianyun Nie	36267753	Ann Transl Med	WB
Zhi Li	34632888	Br J Neurosurg	IHC
Zhiyuan Sun	36230759	Cancers (Basel)	WB

## Storage

**Storage:**  
Store at -20°C. Stable for one year after shipment.  
**Storage Buffer:**  
PBS with 0.02% sodium azide and 50% glycerol pH 7.3.  
Aliquoting is unnecessary for -20°C storage

\*\*\* 20ul sizes contain 0.1% BSA

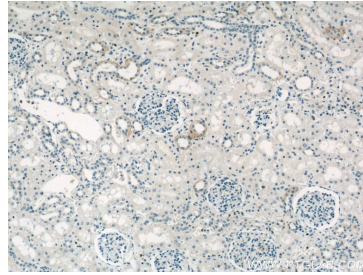
For technical support and original validation data for this product please contact:  
T: 1 (888) 4PTGLAB (1-888-478-4522) (toll free in USA), or 1(312) 455-8498 (outside USA)  
E: proteintech@ptglab.com  
W: ptglab.com

This product is exclusively available under Proteintech Group brand and is not available to purchase from any other manufacturer.

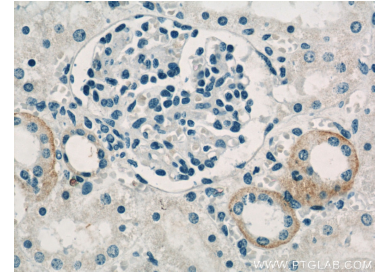
## Selected Validation Data



mouse brain tissue were subjected to SDS PAGE followed by western blot with 55382-1-AP (PKA C-beta-specific antibody) at dilution of 1:500 incubated at room temperature for 1.5 hours.



Immunohistochemical analysis of paraffin-embedded human kidney slide using 55382-1-AP (PKA C-beta-specific antibody at dilution of 1:50.



Immunohistochemical analysis of paraffin-embedded human kidney slide using 55382-1-AP (PKA C-beta-specific antibody at dilution of 1:50.