

For Research Use Only

PPP1R3G Polyclonal antibody

Catalog Number:55389-1-AP



Basic Information

Catalog Number:

55389-1-AP

Size:

150ul , Concentration: 800 ug/ml by Nanodrop;

Source:

Rabbit

Isotype:

IgG

GenBank Accession Number:

NM_001145115

GeneID (NCBI):

648791

UNIPROT ID:

B7ZBB8

Full Name:

protein phosphatase 1, regulatory (inhibitor) subunit 3G

Calculated MW:

38 kDa

Observed MW:

38-40 kDa

Purification Method:

Antigen affinity purification

Recommended Dilutions:

WB: 1:500-1:2000

Applications

Tested Applications:

WB, ELISA

Species Specificity:

human

Positive Controls:

WB : HepG2 cells, L02 cells

Background Information

PPP1R3G (protein phosphatase 1 regulatory subunit 3G) is an important member of phosphatase 1 inhibitor -3 family, which is mainly expressed in liver and muscle and participates in glycogen synthesis and metabolism, insulin signaling pathway and lipid metabolism. PPP1R3G is the direct target of insulin -AKT signaling pathway. Insulin phosphorylates Ser79 site of PPP1R3G through AKT, which promotes its binding with GS, so that GS is dephosphorylated by PP1, thus enhancing glycogen synthesis.

Storage

Storage:

Store at -20°C. Stable for one year after shipment.

Storage Buffer:

PBS with 0.02% sodium azide and 50% glycerol, pH7.3

Aliquoting is unnecessary for -20°C storage

***** 20ul sizes contain 0.1% BSA**

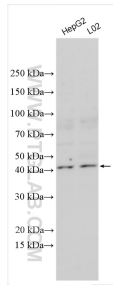
For technical support and original validation data for this product please contact:

T: 1 (888) 4PTGLAB (1-888-478-4522) (toll free in USA), or 1(312) 455-8498 (outside USA)

E: proteintech@ptglab.com
W: ptglab.com

This product is exclusively available under Proteintech Group brand and is not available to purchase from any other manufacturer.

Selected Validation Data



Various lysates were subjected to SDS PAGE followed by western blot with 55389-1-AP (PPP1R3G antibody) at dilution of 1:1000 incubated at room temperature for 1.5 hours.