

For Research Use Only

KIF15 Polyclonal antibody, PBS Only

Catalog Number: 55407-1-PBS

Featured Product



Basic Information

Catalog Number:

55407-1-PBS

Size:

100ug, Concentration: 1 mg/ml by Nanodrop;

Source:

Rabbit

Isotype:

IgG

GenBank Accession Number:

NM_020242

GeneID (NCBI):

56992

UNIPROT ID:

Q9NS87

Full Name:

kinesin family member 15

Calculated MW:

160 kDa

Observed MW:

150-165 kDa

Purification Method:

Antigen affinity purification

Applications

Tested Applications:

WB, IHC, FC (Intra), IP, Indirect ELISA

Species Specificity:

human, mouse

Background Information

KIF15, also named as KLP2 and KNSL7, belongs to the kinesin-like protein family and KLP2 subfamily. It is a plus-end directed kinesin-like motor enzyme which involved in mitotic spindle assembly. Several isoforms of KIF15 exist due to the alternative splicing, with molecular weight between 130-160 kDa. Sometimes higher molecular weight around 200 kDa can also be observed, which may be a modified variant of KIF15. (14618103)

Storage

Storage:

Store at -80°C.

Storage Buffer:

PBS Only

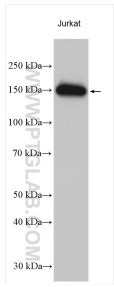
For technical support and original validation data for this product please contact:

T: 1 (888) 4PTGLAB (1-888-478-4522) (toll free in USA), or 1(312) 455-8498 (outside USA)

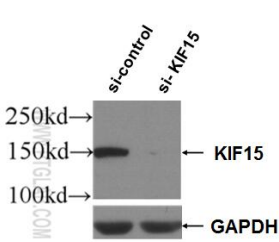
E: proteintech@ptglab.com
W: ptglab.com

This product is exclusively available under Proteintech Group brand and is not available to purchase from any other manufacturer.

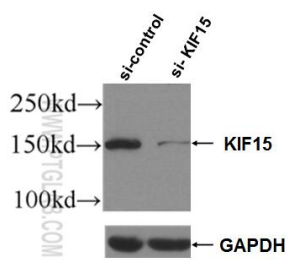
Selected Validation Data



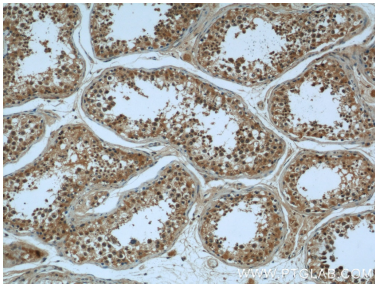
Jurkat cells were subjected to SDS PAGE followed by western blot with 55407-1-AP (KIF15 antibody) at dilution of 1:5000 incubated at room temperature for 1.5 hours. This data was developed using the same antibody clone with 55407-1-PBS in a different storage buffer formulation.



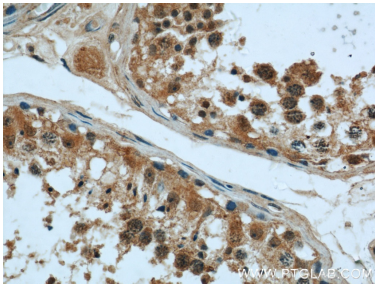
WB result of KIF15 antibody (55407-1-AP; 1:3000; incubated at room temperature for 1.5 hours) with sh-Control and sh-KIF15 transfected HEK-293 cells. This data was developed using the same antibody clone with 55407-1-PBS in a different storage buffer formulation.



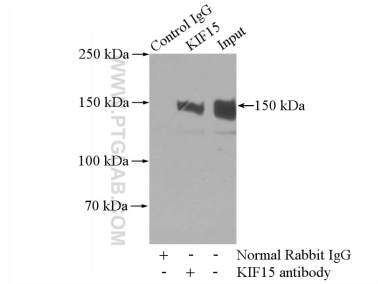
WB result of KIF15 antibody (55407-1-AP; 1:3000; incubated at room temperature for 1.5 hours) with sh-Control and sh-KIF15 transfected Jurkat cells. This data was developed using the same antibody clone with 55407-1-PBS in a different storage buffer formulation.



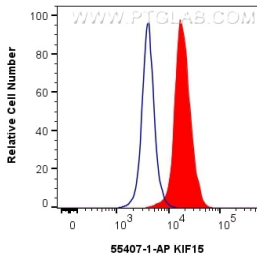
Immunohistochemical analysis of paraffin-embedded human testis using 55407-1-AP (KIF15 antibody) at dilution of 1:50 (under 10x lens). This data was developed using the same antibody clone with 55407-1-PBS in a different storage buffer formulation.



Immunohistochemical analysis of paraffin-embedded human testis using 55407-1-AP (KIF15 antibody) at dilution of 1:50 (under 40x lens). This data was developed using the same antibody clone with 55407-1-PBS in a different storage buffer formulation.



IP result of anti-KIF15 (IP:55407-1-AP, 4ug; Detection:55407-1-AP 1:500) with mouse thymus tissue lysate 2800ug. This data was developed using the same antibody clone with 55407-1-PBS in a different storage buffer formulation.



1x10⁶ HEK-293 cells were intracellularly stained with 0.4 ug KIF15 Polyclonal antibody (55407-1-AP) and CoraLite®488-Conjugated AffiniPure Goat Anti-Rabbit IgG(H+L) (SA00013-2)(red), or 0.4 ug Rabbit IgG control Rabbit PolyAb (30000-O-AP) (blue). Cells were fixed with 4% PFA and permeabilized with Flow Cytometry Perm Buffer (PF00011-C). This data was developed using the same antibody clone with 55407-1-PBS in a different storage buffer formulation.