

For Research Use Only

PYGL Polyclonal antibody

Catalog Number: 55429-1-AP



Basic Information

Catalog Number: 55429-1-AP	GenBank Accession Number: NM_002863	Purification Method: Antigen affinity purification
Size: 150ul , Concentration: 1000 µg/ml by Nanodrop and 507 µg/ml by Bradford method using BSA as the standard;	GeneID (NCBI): 5836	Recommended Dilutions: WB 1:500-1:1000 IP 0.5-4.0 ug for IP and 1:500-1:1000 for WB
Source: Rabbit	Full Name: phosphorylase, glycogen, liver	IF 1:20-1:200
Isotype: IgG	Calculated MW: 97 kDa	
	Observed MW: 97-105 kDa	

Applications

Tested Applications: IF, IP, WB, ELISA	Positive Controls: WB : HepG2 cells, HeLa cells
Species Specificity: human, mouse	IP : HepG2 cells, IF : HepG2 cells,

Background Information

PYGL belongs to the glycogen phosphorylase family. Phosphorylase is an important allosteric enzyme in carbohydrate metabolism. Enzymes from different sources differ in their regulatory mechanisms and in their natural substrates. However, all known phosphorylases share catalytic and structural properties. Defects in PYGL are the cause of glycogen storage disease type 6 (GSD6). This antibody is specific to PYGL. It has no cross reaction to PYGM and PYGB.

Storage

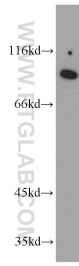
Storage:
Store at -20°C.
Storage Buffer:
PBS with 0.02% sodium azide and 50% glycerol pH 7.3.
Aliquoting is unnecessary for -20°C storage

*** 20ul sizes contain 0.1% BSA

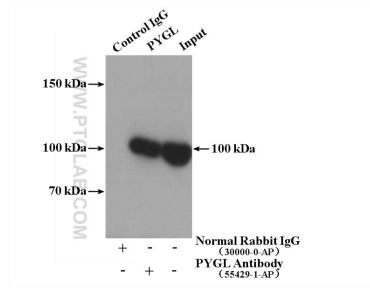
For technical support and original validation data for this product please contact:
T: 1 (888) 4PTGLAB (1-888-478-4522) (toll free in USA), or 1(312) 455-8498 (outside USA)
E: proteintech@ptglab.com
W: ptglab.com

This product is exclusively available under Proteintech Group brand and is not available to purchase from any other manufacturer.

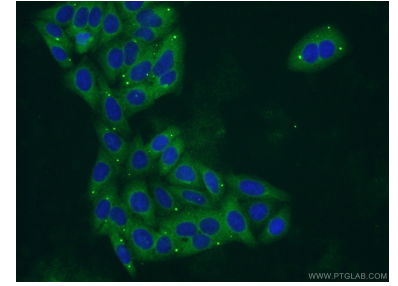
Selected Validation Data



HepG2 cells were subjected to SDS PAGE followed by western blot with 55429-1-AP (PYGL antibody) at dilution of 1:500 incubated at room temperature for 1.5 hours.



IP Result of anti-PYGL (IP:55429-1-AP, 4ug; Detection:55429-1-AP 1:500) with HepG2 cells lysate 2400ug.



Immunofluorescent analysis of HepG2 cells using 55429-1-AP (PYGL antibody) at dilution of 1:50 and Alexa Fluor 488-conjugated AffiniPure Goat Anti-Rabbit IgG(H+L).