

For Research Use Only

SCN4B Polyclonal antibody

Catalog Number: 55438-1-AP



Basic Information

Catalog Number:

55438-1-AP

Size:

150ul, Concentration: 1000 ug/ml by Nanodrop and 387 ug/ml by Bradford method using BSA as the standard;

Source:

Rabbit

Isotype:

IgG

GenBank Accession Number:

NM_174934

GeneID (NCBI):

6330

UNIPROT ID:

Q8IWT1

Full Name:

sodium channel, voltage-gated, type IV, beta

Calculated MW:

25 kDa

Observed MW:

28 kDa

Purification Method:

Antigen affinity purification

Recommended Dilutions:

WB 1:500-1:1000

IHC 1:20-1:200

Applications

Tested Applications:

WB, IHC, ELISA

Species Specificity:

human, mouse

Note-IHC: suggested antigen retrieval with TE buffer pH 9.0; (*) Alternatively, antigen retrieval may be performed with citrate buffer pH 6.0

Positive Controls:

WB : mouse heart tissue, mouse brain tissue

IHC : human skeletal muscle tissue,

Background Information

Mammalian sodium channels are heterotrimers, composed of a central, pore-forming alpha subunit and two auxiliary beta subunits (PMID: 11486343). SCN4B (sodium channel subunit beta-4) is one of several sodium channel beta subunits, which modulate channel gating kinetics. SCN4B has an N-terminal signal peptide, a large extracellular domain predicted to form an Ig-like fold, a single transmembrane alpha helix, and a short cytoplasmic C terminus. Defects in SCN4B gene are a cause of long QT syndrome type 10 (LQT10).

Storage

Storage:

Store at -20°C.

Storage Buffer:

PBS with 0.02% sodium azide and 50% glycerol pH 7.3.

Aliquoting is unnecessary for -20°C storage

***** 20ul sizes contain 0.1% BSA**

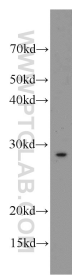
For technical support and original validation data for this product please contact:

T: 1 (888) 4PTGLAB (1-888-478-4522) (toll free in USA), or 1(312) 455-8498 (outside USA)

E: proteintech@ptglab.com
W: ptglab.com

This product is exclusively available under Proteintech Group brand and is not available to purchase from any other manufacturer.

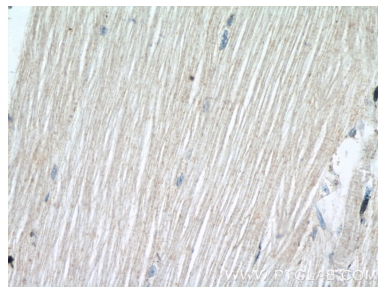
Selected Validation Data



mouse heart tissue were subjected to SDS PAGE followed by western blot with 55438-1-AP (SCN4B antibody) at dilution of 1:500 incubated at room temperature for 1.5 hours.



Immunohistochemical analysis of paraffin-embedded human skeletal muscle tissue slide using 55438-1-AP (SCN4B Antibody) at dilution of 1:50 (under 10x lens).



Immunohistochemical analysis of paraffin-embedded human skeletal muscle tissue slide using 55438-1-AP (SCN4B Antibody) at dilution of 1:50 (under 40x lens).