

For Research Use Only

# EXOC6B Polyclonal antibody, PBS Only

Catalog Number: 55440-1-PBS



## Basic Information

**Catalog Number:**

55440-1-PBS

**Size:**

100ug, Concentration: 1 mg/ml by Nanodrop;

**Source:**

Rabbit

**Isotype:**

IgG

**GenBank Accession Number:**

NM\_015189

**GeneID (NCBI):**

23233

**UNIPROT ID:**

Q9Y2D4

**Full Name:**

exocyst complex component 6B

**Calculated MW:**

94 kDa

**Observed MW:**

94 kDa

**Purification Method:**

Antigen affinity purification

## Applications

**Tested Applications:**

WB, IHC, IF/ICC, IP, Indirect ELISA

**Species Specificity:**

human, mouse

## Storage

**Storage:**

Store at -80°C.

**Storage Buffer:**

PBS only, pH7.3

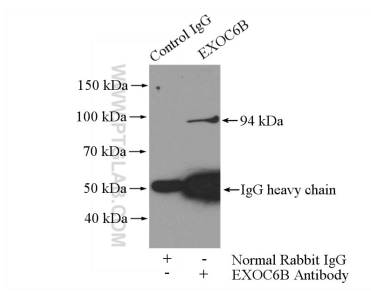
For technical support and original validation data for this product please contact:

T: 1 (888) 4PTGLAB (1-888-478-4522) (toll free in USA), or 1(312) 455-8498 (outside USA)

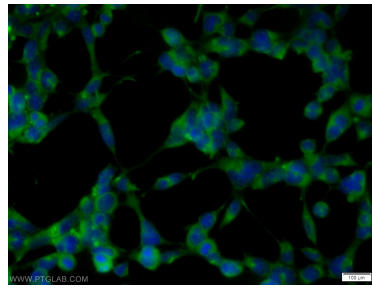
E: [proteintech@ptglab.com](mailto:proteintech@ptglab.com)  
W: [ptglab.com](http://ptglab.com)

This product is exclusively available under Proteintech Group brand and is not available to purchase from any other manufacturer.

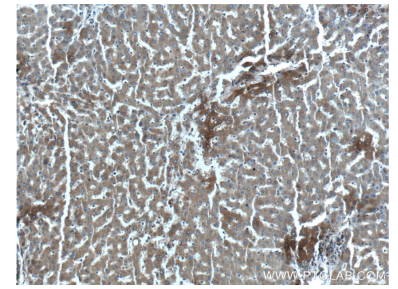
## Selected Validation Data



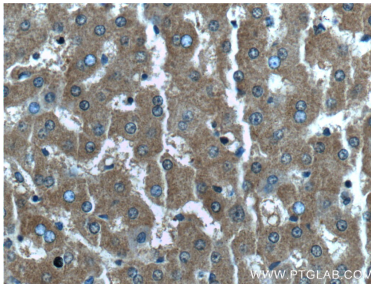
IP result of anti-EXOC6B (IP:55440-1-AP, 4 $\mu$ g; Detection:55440-1-AP 1:500) with HEK-293 cells lysate 3200 $\mu$ g. This data was developed using the same antibody clone with 55440-1-PBS in a different storage buffer formulation.



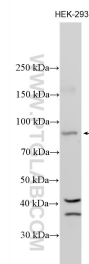
Immunofluorescent analysis of HEK-293 cells using 55440-1-AP (EXOC6B antibody) at dilution of 1:50 and Alexa Fluor 488-conjugated AffiniPure Goat Anti-Rabbit IgG(H+L). This data was developed using the same antibody clone with 55440-1-PBS in a different storage buffer formulation.



Immunohistochemical analysis of paraffin-embedded human liver tissue slide using 55440-1-AP (EXOC6B antibody) at dilution of 1:200 (under 10 $\times$  lens). This data was developed using the same antibody clone with 55440-1-PBS in a different storage buffer formulation.



Immunohistochemical analysis of paraffin-embedded human liver tissue slide using 55440-1-AP (EXOC6B antibody) at dilution of 1:200 (under 40 $\times$  lens). This data was developed using the same antibody clone with 55440-1-PBS in a different storage buffer formulation.



HEK-293 cells lysates were subjected to SDS PAGE followed by western blot with 55440-1-AP (EXOC6B antibody) at dilution of 1:1000 incubated at room temperature for 1.5 hours. This data was developed using the same antibody clone with 55440-1-PBS in a different storage buffer formulation.