

For Research Use Only

SLC12A3/NCCT Polyclonal antibody

Catalog Number:55442-1-AP



Basic Information

| | | |
|---|--|---|
| Catalog Number: 55442-1-AP | GenBank Accession Number: NM_000339 | Purification Method: Antigen affinity purification |
| Size: 150ul , Concentration: 700 ug/ml by Nanodrop; | GeneID (NCBI): 6559 | Recommended Dilutions: WB: 1:1000-1:4000 IHC: 1:500-1:2000 |
| Source: Rabbit | UNIPROT ID: P55017 | |
| Isotype: IgG | Full Name: solute carrier family 12 (sodium/chloride transporters), member 3 | |
| | Calculated MW: 114 kDa | |
| | Observed MW: 150 kDa | |

Applications

| | |
|--|---|
| Tested Applications: WB, IHC, ELISA | Positive Controls: WB : 37°C incubated mouse kidney tissue, IHC : mouse kidney tissue, |
| Species Specificity: human, mouse | |
| Note-IHC: suggested antigen retrieval with TE buffer pH 9.0; (*) Alternatively, antigen retrieval may be performed with citrate buffer pH 6.0 | |

Background Information

SLC12A3 also known as NCCT, NCC, is a sodium-chloride cotransporter (NCC), which mainly functions in the distal convoluted tubules of the kidney and is responsible for the reabsorption of sodium ions and chloride ions (PMID: 35591852). This cotransporter is the target of thiazide diuretics used in the treatment of hypertension. Mutations in SLC12A3 cause Gitelman syndrome (PMID: 8528245, 33462018).

Storage

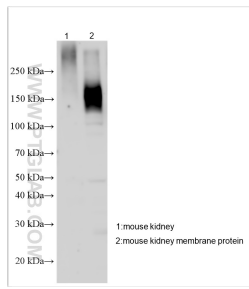
Storage:
Store at -20°C. Stable for one year after shipment.
Storage Buffer:
PBS with 0.02% sodium azide and 50% glycerol, pH7.3
Aliquoting is unnecessary for -20°C storage

*** 20ul sizes contain 0.1% BSA

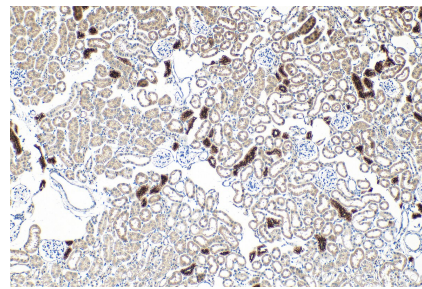
For technical support and original validation data for this product please contact:
T: 1 (888) 4PTGLAB (1-888-478-4522) (toll free in USA), or 1(312) 455-8498 (outside USA)
E: proteintech@ptglab.com
W: ptglab.com

This product is exclusively available under Proteintech Group brand and is not available to purchase from any other manufacturer.

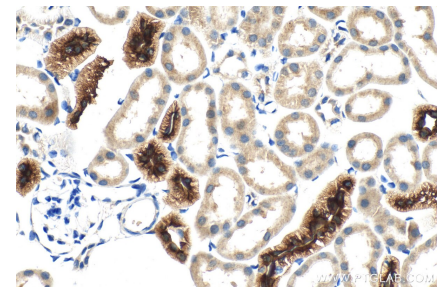
Selected Validation Data



37°C incubated mouse kidney tissue were subjected to SDS PAGE followed by western blot with 55442-1-AP (SLC12A3/NCCT antibody) at dilution of 1:2000 incubated at room temperature for 1.5 hours.



Immunohistochemical analysis of paraffin-embedded mouse kidney tissue slide using 55442-1-AP (SLC12A3/NCCT antibody) at dilution of 1:1000 (under 10x lens). Heat mediated antigen retrieval with Tris-EDTA buffer (pH 9.0).



Immunohistochemical analysis of paraffin-embedded mouse kidney tissue slide using 55442-1-AP (SLC12A3/NCCT antibody) at dilution of 1:1000 (under 40x lens). Heat mediated antigen retrieval with Tris-EDTA buffer (pH 9.0).