

For Research Use Only

GSG2 Polyclonal antibody

Catalog Number: 55454-1-AP



Basic Information

Catalog Number: 55454-1-AP	GenBank Accession Number: NM_031965	Purification Method: Antigen affinity purification
Size: 150ul , Concentration: 400 µg/ml by Nanodrop;	GeneID (NCBI): 83903	Recommended Dilutions: WB 1:500-1:2000
Source: Rabbit	Full Name: germ cell associated 2 (haspin)	
Isotype: IgG	Calculated MW: 88 kDa	
	Observed MW: 90 kDa	

Applications

Tested Applications: WB, ELISA	Positive Controls: WB : HEK-293T cells, K-562 cells, Raji cells
Species Specificity: human	

Background Information

Haploid germ cell-specific nuclear protein kinase (Haspin, alias GSG2) is an atypical eukaryotic protein kinase that was for a long time considered an inactive pseudokinase due to the low degree of structural homology of GSG2 with the 'classical' protein kinases (PMID: 29698892). GSG2 is a serine/threonine kinase that associates with chromosomes and phosphorylates threonine 3 of histone 3 during mitosis (PMID: 32439830).

Storage

Storage:
Store at -20°C. Stable for one year after shipment.
Storage Buffer:
PBS with 0.02% sodium azide and 50% glycerol pH 7.3.
Aliquoting is unnecessary for -20°C storage

*** 20ul sizes contain 0.1% BSA

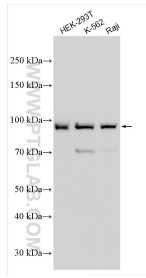
For technical support and original validation data for this product please contact:

T: 1 (888) 4PTGLAB (1-888-478-4522) (toll free in USA), or 1(312) 455-8498 (outside USA)

E: proteintech@ptglab.com
W: ptglab.com

This product is exclusively available under Proteintech Group brand and is not available to purchase from any other manufacturer.

Selected Validation Data



Various lysates were subjected to SDS PAGE followed by western blot with 55454-1-AP (GSG2 antibody) at dilution of 1:1000 incubated at room temperature for 1.5 hours.