

For Research Use Only

UBE2E1 Polyclonal antibody, PBS Only

Catalog Number: 55457-1-PBS

Featured Product



Basic Information

Catalog Number:

55457-1-PBS

Size:

100ug, Concentration: 1 mg/ml by Nanodrop;

Source:

Rabbit

Isotype:

IgG

GenBank Accession Number:

NM_003341

GeneID (NCBI):

7324

UNIPROT ID:

P51965

Full Name:

ubiquitin-conjugating enzyme E2E 1 (UBC4/5 homolog, yeast)

Calculated MW:

21 kDa

Observed MW:

21-27 kDa

Purification Method:

Antigen affinity purification

Applications

Tested Applications:

WB, IHC, IF/ICC, Indirect ELISA

Species Specificity:

human

Background Information

UBE2E1 is a class III E2 ubiquitin conjugating enzyme that belongs to the UBE2E family of E2s, comprising UBE2E1/UBCH6, UBE2E2/UBCH8, and UBE2E3/UBCH9. UBE2E family members share a highly conserved UBC domain but are distinguished from one another by their unique N-terminal extensions. UBE2E1 contains a 50-residue unstructured N-terminal extension rich in serine and lysine residues, which has been shown to interact with USP7 and is essential for USP7-mediated UBE2E1 stabilization. In addition to its ubiquitin conjugating activity, UBE2E1 can also act as an ISG15 conjugating enzyme in vitro, although this activity has not been shown to occur in vivo. UBE2E1 can be covalently modified with either ISG15 or ubiquitin, both of which interfere with the ubiquitin conjugating activity of UBE2E1. UBE2E1 has also been reported to monoubiquitinate histone H2A at K119 in concert with the PRC1 E3 ligase complex. Full-length UBE2E1 is reported to be a dimer, with dimerization mediated by interaction of residues 21-27 from one molecule with the core domain of another molecule, as well as by contacts between a1 of the two interacting molecules. (PMID: 28073915, PMID: 30282802, PMID: 23871895)

Storage

Storage:

Store at -80°C.

Storage Buffer:

PBS only, pH7.3

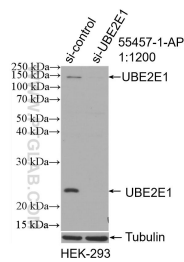
For technical support and original validation data for this product please contact:

T: 1 (888) 4PTGLAB (1-888-478-4522) (toll free in USA), or 1(312) 455-8498 (outside USA)

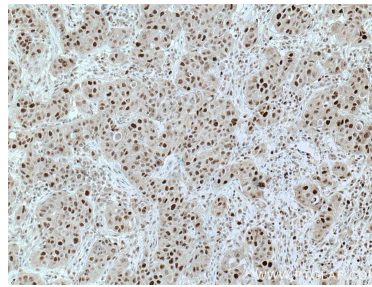
E: proteintech@ptglab.com
W: ptglab.com

This product is exclusively available under Proteintech Group brand and is not available to purchase from any other manufacturer.

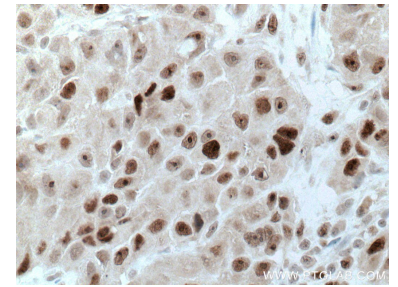
Selected Validation Data



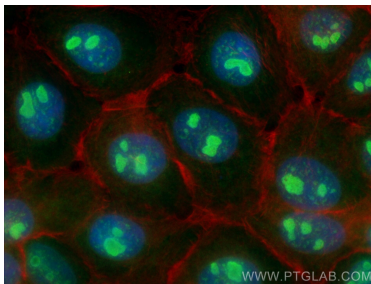
WB result of UBE2E1 antibody (55457-1-AP; 1:1200; incubated at room temperature for 1.5 hours) with sh-Control and sh-UBE2E1 transfected HEK-293 cells. This data was developed using the same antibody clone with 55457-1-PBS in a different storage buffer formulation.



Immunohistochemical analysis of paraffin-embedded human breast cancer tissue slide using 55457-1-AP (UBE2E1 antibody) at dilution of 1:200 (under 10x lens. Heat mediated antigen retrieval with Tris-EDTA buffer (pH 9.0). This data was developed using the same antibody clone with 55457-1-PBS in a different storage buffer formulation.



Immunohistochemical analysis of paraffin-embedded human breast cancer tissue slide using 55457-1-AP (UBE2E1 antibody) at dilution of 1:200 (under 40x lens. Heat mediated antigen retrieval with Tris-EDTA buffer (pH 9.0). This data was developed using the same antibody clone with 55457-1-PBS in a different storage buffer formulation.



Immunofluorescent analysis of (4% PFA) fixed A431 cells using UBE2E1 antibody (55457-1-AP) at dilution of 1:200 and CoraLite®488-Conjugated Goat Anti-Rabbit IgG(H+L) (SA00013-2), CL594-phalloidin (red). This data was developed using the same antibody clone with 55457-1-PBS in a different storage buffer formulation.