

For Research Use Only

Phospholipase C epsilon 1 Polyclonal antibody



Catalog Number: 55463-1-AP

Basic Information

Catalog Number: 55463-1-AP	GenBank Accession Number: NM_016341	Purification Method: Antigen affinity purification
Size: 150ul , Concentration: 2500 µg/ml by Nanodrop;	GeneID (NCBI): 51196	Recommended Dilutions: IHC 1:500-1:2000
Source: Rabbit	Full Name: phospholipase C, epsilon 1	
Isotype: IgG	Calculated MW: 257 kDa	

Applications

Tested Applications:

IHC, ELISA

Species Specificity:

human

Note-IHC: suggested antigen retrieval with TE buffer pH 9.0; (*) Alternatively, antigen retrieval may be performed with citrate buffer pH 6.0

Positive Controls:

IHC : human kidney tissue, human oesophagus cancer tissue, human stomach cancer tissue, human colon tissue, human colon cancer tissue, human lung cancer tissue

Background Information

Phospholipase C epsilon 1 (PLCE1) is also named as KIAA1516, PLCE and PPLC. TRAPPC10 (Cyclin-J) Belongs to the Cyclin family. PLCE1, which mediates small GTPases of the Ras superfamily through the activity of its Ras guanine exchange factor, is a bifunctional enzyme (PMID: 31867717). As the effector of heterotrimer and small G protein, it is involved in regulating cell growth, cell survival, T-cell activation, and actin organization (PMID: 32238860). PLCE1 is identified as a member of phospholipase family, and PLCE1 was upregulated in LPS-induced pneumonia cells (PMID: 35527658). PLCE1 is involved in the regulation of Rho GTPases and MAPKs in podocytes, and PLCE1 interacts with NCK2 but not with NCK1 (PMID: 32238860). PLCE1 is a multifunctional enzyme exhibiting phospholipase as well as RasGEF activities (PMID: 11022047).

Storage

Storage:

Store at -20°C. Stable for one year after shipment.

Storage Buffer:

PBS with 0.02% sodium azide and 50% glycerol pH 7.3.

Aliquoting is unnecessary for -20°C storage

*** 20ul sizes contain 0.1% BSA

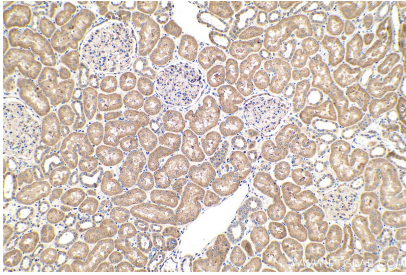
For technical support and original validation data for this product please contact:

T: 1 (888) 4PTGLAB (1-888-478-4522) (toll free in USA), or 1(312) 455-8498 (outside USA)

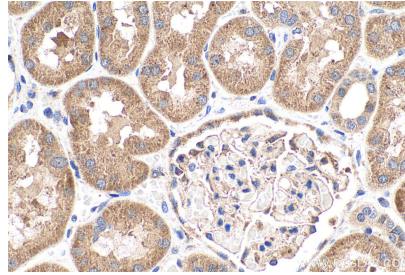
E: proteintech@ptglab.com
W: ptglab.com

This product is exclusively available under Proteintech Group brand and is not available to purchase from any other manufacturer.

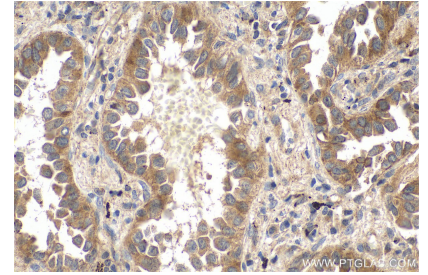
Selected Validation Data



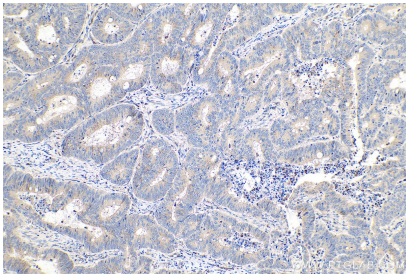
Immunohistochemical analysis of paraffin-embedded human kidney tissue slide using 55463-1-AP (Phospholipase C epsilon 1 antibody) at dilution of 1:1000 (under 10x lens). Heat mediated antigen retrieval with Tris-EDTA buffer (pH 9.0).



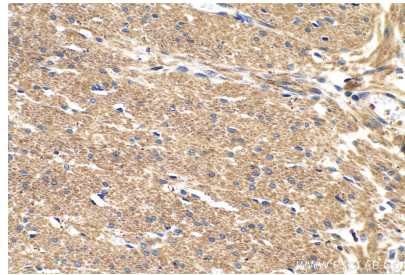
Immunohistochemical analysis of paraffin-embedded human kidney tissue slide using 55463-1-AP (Phospholipase C epsilon 1 antibody) at dilution of 1:1000 (under 40x lens). Heat mediated antigen retrieval with Tris-EDTA buffer (pH 9.0).



Immunohistochemical analysis of paraffin-embedded human lung cancer tissue slide using 55463-1-AP (Phospholipase C epsilon 1 antibody) at dilution of 1:1000 (under 40x lens). Heat mediated antigen retrieval with Tris-EDTA buffer (pH 9.0).



Immunohistochemical analysis of paraffin-embedded human colon cancer tissue slide using 55463-1-AP (Phospholipase C epsilon 1 antibody) at dilution of 1:1000 (under 10x lens). Heat mediated antigen retrieval with Tris-EDTA buffer (pH 9.0).



Immunohistochemical analysis of paraffin-embedded human colon tissue slide using 55463-1-AP (Phospholipase C epsilon 1 antibody) at dilution of 1:1000 (under 40x lens). Heat mediated antigen retrieval with Tris-EDTA buffer (pH 9.0).