

For Research Use Only

MMP20 Polyclonal antibody

Catalog Number: 55467-1-AP

5 Publications



Basic Information

Catalog Number:

55467-1-AP

Size:

150ul, Concentration: 1000 ug/ml by Nanodrop and 740 ug/ml by Bradford method using BSA as the standard;

Source:

Rabbit

Isotype:

IgG

GenBank Accession Number:

NM_004771

GeneID (NCBI):

9313

UNIPROT ID:

O60882

Full Name:

matrix metalloproteinase 20

Calculated MW:

54 kDa

Observed MW:

54 kDa

Purification Method:

Antigen affinity purification

Recommended Dilutions:

WB 1:500-1:2000

IHC 1:20-1:200

IF/ICC 1:10-1:100

Applications

Tested Applications:

WB, IHC, IF/ICC, ELISA

Cited Applications:

WB, IHC, IF

Species Specificity:

human, mouse, rat

Cited Species:

human, mouse, rat

Note-IHC: suggested antigen retrieval with TE buffer pH 9.0; (*) Alternatively, antigen retrieval may be performed with citrate buffer pH 6.0

Positive Controls:

WB : mouse brain tissue, rat brain tissue

IHC : human liver cancer tissue,

IF/ICC : HeLa cells,

Background Information

MMP20 belongs to the peptidase M10A family. It degrades amelogenin, the major protein component of the enamel matrix and two of the macromolecules characterizing the cartilage extracellular matrix: aggrecan and the cartilage oligomeric matrix protein (COMP). MMP20 may play a central role in tooth enamel formation. Defects in MMP20 are the cause of amelogenesis imperfecta hypomaturation type 2A2 (AI2A2). This antibody is specific to MMP20.

Notable Publications

Author	Pubmed ID	Journal	Application
Akiko Suzuki	35401675	Front Genet	WB
Hiroki Yoshioka	33672174	Int J Mol Sci	IF
Haoman Niu	36579844	Cell Prolif	WB

Storage

Storage:

Store at -20°C.

Storage Buffer:

PBS with 0.02% sodium azide and 50% glycerol pH 7.3.

Aliquoting is unnecessary for -20°C storage

*** 20ul sizes contain 0.1% BSA

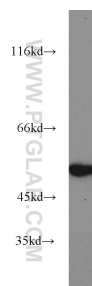
For technical support and original validation data for this product please contact:

T: 1 (888) 4PTGLAB (1-888-478-4522) (toll free in USA), or 1(312) 455-8498 (outside USA)

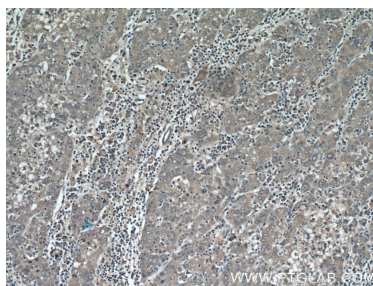
E: proteintech@ptglab.com
W: ptglab.com

This product is exclusively available under Proteintech Group brand and is not available to purchase from any other manufacturer.

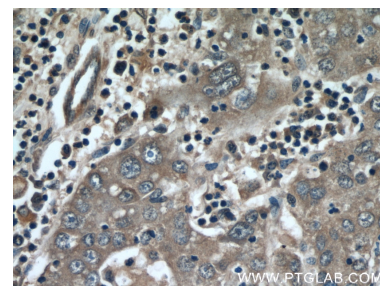
Selected Validation Data



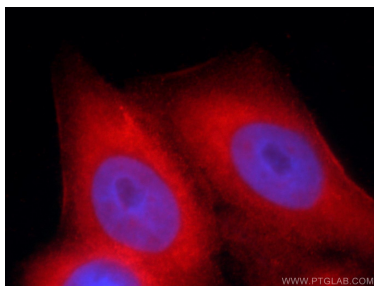
mouse brain tissue were subjected to SDS PAGE followed by western blot with 55467-1-AP (MMP20 antibody) at dilution of 1:1000 incubated at room temperature for 1.5 hours.



Immunohistochemical analysis of paraffin-embedded human liver cancer using 55467-1-AP (MMP20 antibody) at dilution of 1:50 (under 10x lens).



Immunohistochemical analysis of paraffin-embedded human liver cancer using 55467-1-AP (MMP20 antibody) at dilution of 1:50 (under 40x lens).



Immunofluorescent analysis of HeLa cells using 55467-1-AP (MMP20 antibody) at dilution of 1:25 and Rhodamine-Goat anti-Rabbit IgG.