

For Research Use Only

MMP20 Polyclonal antibody, PBS Only

Catalog Number: 55467-1-PBS



Basic Information

Catalog Number:

55467-1-PBS

Size:

100ug, Concentration: 1 mg/ml by Nanodrop;

Source:

Rabbit

Isotype:

IgG

GenBank Accession Number:

NM_004771

GeneID (NCBI):

9313

UNIPROT ID:

O60882

Full Name:

matrix metalloproteinase 20

Calculated MW:

54 kDa

Observed MW:

54 kDa

Purification Method:

Antigen affinity purification

Applications

Tested Applications:

WB, IHC, IF/ICC, Indirect ELISA

Species Specificity:

human, mouse, rat

Background Information

MMP20 belongs to the peptidase M10A family. It degrades amelogenin, the major protein component of the enamel matrix and two of the macromolecules characterizing the cartilage extracellular matrix: aggrecan and the cartilage oligomeric matrix protein (COMP). MMP20 may play a central role in tooth enamel formation. Defects in MMP20 are the cause of amelogenesis imperfecta hypomaturation type 2A2 (AI2A2). This antibody is specific to MMP20.

Storage

Storage:

Store at -80°C.

Storage Buffer:

PBS only, pH7.3

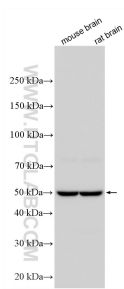
For technical support and original validation data for this product please contact:

T: 1 (888) 4PTGLAB (1-888-478-4522) (toll free in USA), or 1(312) 455-8498 (outside USA)

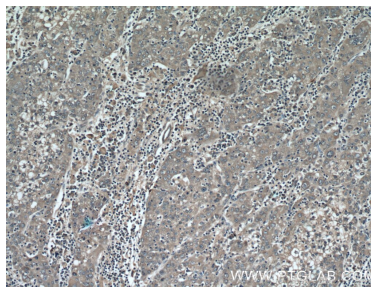
E: proteintech@ptglab.com
W: ptglab.com

This product is exclusively available under Proteintech Group brand and is not available to purchase from any other manufacturer.

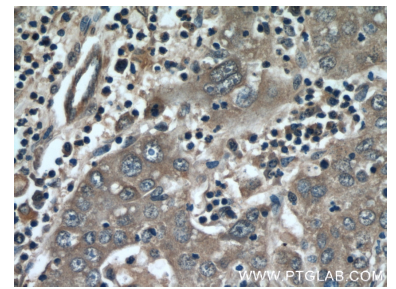
Selected Validation Data



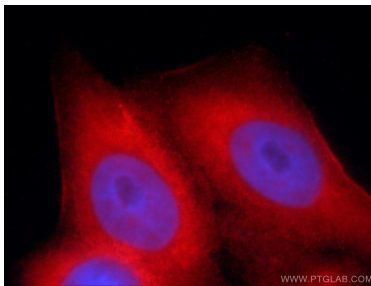
Various lysates were subjected to SDS PAGE followed by western blot with 55467-1-AP (MMP20 antibody) at dilution of 1:2000 incubated at room temperature for 1.5 hours. This data was developed using the same antibody clone with 55467-1-PBS in a different storage buffer formulation.



Immunohistochemical analysis of paraffin-embedded human liver cancer using 55467-1-AP (MMP20 antibody) at dilution of 1:50 (under 10x lens). This data was developed using the same antibody clone with 55467-1-PBS in a different storage buffer formulation.



Immunohistochemical analysis of paraffin-embedded human liver cancer using 55467-1-AP (MMP20 antibody) at dilution of 1:50 (under 40x lens). This data was developed using the same antibody clone with 55467-1-PBS in a different storage buffer formulation.



Immunofluorescent analysis of HeLa cells using 55467-1-AP (MMP20 antibody) at dilution of 1:25 and Rhodamine-Goat anti-Rabbit IgG. This data was developed using the same antibody clone with 55467-1-PBS in a different storage buffer formulation.