

For Research Use Only

CCBL2 Polyclonal antibody

Catalog Number: 55476-1-AP



Basic Information

Catalog Number: 55476-1-AP	GenBank Accession Number: NM_019610	Purification Method: Antigen affinity purification
Size: 150ul , Concentration: 450 µg/ml by Nanodrop;	GeneID (NCBI): 56267	Recommended Dilutions: WB 1:1000-1:4000
Source: Rabbit	Full Name: cysteine conjugate-beta lyase 2	
Isotype: IgG	Calculated MW: 51 kDa	
	Observed MW: 48 kDa 51- 55 kda	

Applications

Tested Applications: WB, ELISA	Positive Controls: WB : HEK-293 cells,
Species Specificity: human	

Background Information

Cysteine conjugate beta-lyase 2 (CCBL2), also known as kynurenine aminotransferase 3 (KAT3) or glutamine transaminase L (GTL), can effectively catalyze the transamination of glutamine, methionine, and kynurenine (KYN) to kynurenic acid (KYNA) as well as the pathway of drug metabolism by cytochrome P450. CCBL2 has been found in mouse, rat, and human whose mRNA is widely expressed in several organs such as the liver, kidney, heart, and neuroendocrine tissues (PMID: 35771747).

Storage

Storage:
Store at -20°C. Stable for one year after shipment.
Storage Buffer:
PBS with 0.02% sodium azide and 50% glycerol pH 7.3.
Aliquoting is unnecessary for -20°C storage

*** 20ul sizes contain 0.1% BSA

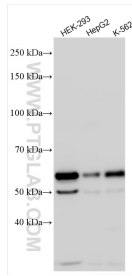
For technical support and original validation data for this product please contact:

T: 1 (888) 4PTGLAB (1-888-478-4522) (toll free in USA), or 1(312) 455-8498 (outside USA)

E: proteintech@ptglab.com
W: ptglab.com

This product is exclusively available under Proteintech Group brand and is not available to purchase from any other manufacturer.

Selected Validation Data



Various lysates were subjected to SDS PAGE followed by western blot with 55476-1-AP (CCBL2 antibody) at dilution of 1:2000 incubated at room temperature for 1.5 hours.