

For Research Use Only

# CCBL2 Polyclonal antibody, PBS Only

Catalog Number:55476-1-PBS



## Basic Information

**Catalog Number:**

55476-1-PBS

**Size:**

100ug , Concentration: 1 mg/ml by Nanodrop;

**Source:**

Rabbit

**Isotype:**

IgG

**GenBank Accession Number:**

NM\_019610

**GeneID (NCBI):**

56267

**UNIPROT ID:**

Q6YP21

**Full Name:**

cysteine conjugate-beta lyase 2

**Calculated MW:**

51 kDa

**Observed MW:**

48 kDa 51- 55 kda

**Purification Method:**

Antigen affinity purification

## Applications

**Tested Applications:**

WB, IHC, IF/ICC, Indirect ELISA

**Species Specificity:**

human

## Background Information

Cysteine conjugate beta-lyase 2 (CCBL2), also known as kynurenine aminotransferase 3 (KAT3) or glutamine transaminase L (GTL), can effectively catalyze the transamination of glutamine, methionine, and kynurenine (KYN) to kynurenic acid (KYNA) as well as the pathway of drug metabolism by cytochrome P450. CCBL2 has been found in mouse, rat, and human whose mRNA is widely expressed in several organs such as the liver, kidney, heart, and neuroendocrine tissues (PMID: 35771747).

## Storage

**Storage:**

Store at -80°C.

**Storage Buffer:**

PBS only, pH7.3

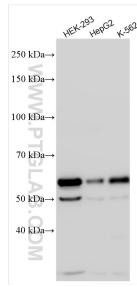
For technical support and original validation data for this product please contact:

T: 1 (888) 4PTGLAB (1-888-478-4522) (toll free in USA), or 1(312) 455-8498 (outside USA)

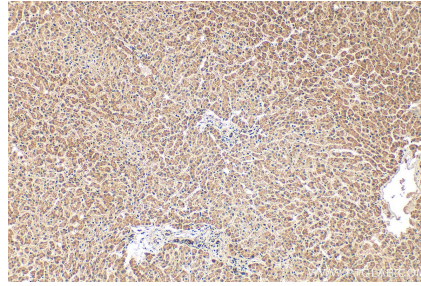
E: [proteintech@ptglab.com](mailto:proteintech@ptglab.com)  
W: [ptglab.com](http://ptglab.com)

**This product is exclusively available under Proteintech Group brand and is not available to purchase from any other manufacturer.**

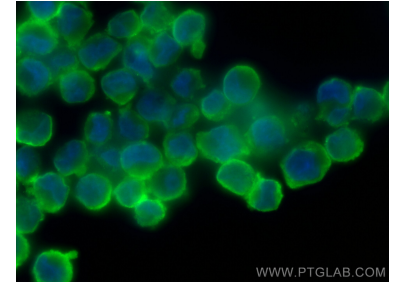
## Selected Validation Data



Various lysates were subjected to SDS PAGE followed by western blot with 55476-1-AP (CCBL2 antibody) at dilution of 1:2000 incubated at room temperature for 1.5 hours. This data was developed using the same antibody clone with 55476-1-PBS in a different storage buffer formulation.



Immunohistochemical analysis of paraffin-embedded human liver tissue slide using 55476-1-AP (CCBL2 antibody) at dilution of 1:200 (under 10x lens). Heat mediated antigen retrieval with Tris-EDTA buffer (pH 9.0). This data was developed using the same antibody clone with 55476-1-PBS in a different storage buffer formulation.



Immunofluorescent analysis of (4% PFA) fixed K-562 cells using CCBL2 antibody (55476-1-AP) at dilution of 1:400 and CoraLite®488-Conjugated Goat Anti-Rabbit IgG(H+L) (SA00013-2). This data was developed using the same antibody clone with 55476-1-PBS in a different storage buffer formulation.