

For Research Use Only

# LRRC38 Polyclonal antibody

Catalog Number: 55479-1-AP



## Basic Information

<b>Catalog Number:</b> 55479-1-AP	<b>GenBank Accession Number:</b> XM_001713942	<b>Purification Method:</b> Antigen affinity purification
<b>Size:</b> 150ul, Concentration: 800 ug/ml by Nanodrop and 267 ug/ml by Bradford method using BSA as the standard;	<b>GeneID (NCBI):</b> 126755	<b>Recommended Dilutions:</b> WB 1:200-1:1000
<b>Source:</b> Rabbit	<b>Full Name:</b> leucine rich repeat containing 38	
<b>Isotype:</b> IgG	<b>Calculated MW:</b> 32 kDa	
	<b>Observed MW:</b> 32 kDa	

## Applications

<b>Tested Applications:</b> WB, ELISA	<b>Positive Controls:</b> WB : RAW 264.7 cells,
<b>Species Specificity:</b> human, mouse	

## Background Information

The large-conductance, calcium- and voltage-activated potassium (BK) channels are characterized by their large conductance of potassium ions (K<sup>+</sup>) through cell membranes. BK channels are widely expressed with diverse functions in different tissues or cell types, consisting of the pore-forming, voltage- and, calcium-sensing alpha subunits, either alone or in association with regulatory subunits (PMID: 25360119; 22547800). LRRC38 belongs to the gamma family of BK channel accessory subunits that regulate channel gating properties.

## Storage

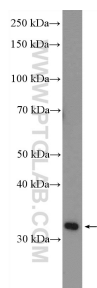
**Storage:**  
Store at -20°C.  
**Storage Buffer:**  
PBS with 0.02% sodium azide and 50% glycerol pH 7.3.  
Aliquoting is unnecessary for -20°C storage

\*\*\* 20ul sizes contain 0.1%BSA

For technical support and original validation data for this product please contact:  
T: 1 (888) 4PTGLAB (1-888-478-4522) (toll free in USA), or 1(312) 455-8498 (outside USA)  
E: [proteintech@ptglab.com](mailto:proteintech@ptglab.com)  
W: [ptglab.com](http://ptglab.com)

This product is exclusively available under Proteintech Group brand and is not available to purchase from any other manufacturer.

## Selected Validation Data



RAW 264.7 cells were subjected to SDS PAGE followed by western blot with 55479-1-AP (LRRC38 Antibody) at dilution of 1:300 incubated at room temperature for 1.5 hours.