

For Research Use Only

Inhibin Beta A Monoclonal antibody

Catalog Number: 60015-1-Ig **2 Publications**



Basic Information

Catalog Number:

60015-1-Ig

Size:

150ul , Concentration: 1000 µg/ml by Bradford method using BSA as the standard;

Source:

Mouse

Isotype:

IgG1

Immunogen Catalog Number:

AG1001

GenBank Accession Number:

BC007858

GeneID (NCBI):

3624

UNIPROT ID:

P08476

Full Name:

inhibin, beta A

Calculated MW:

47 kDa

Purification Method:

Caprylic acid/ammonium sulfate precipitation

CloneNo.:

1E3C6

Recommended Dilutions:

WB 1:200-1:1000

Applications

Tested Applications:

WB, ELISA

Cited Applications:

WB

Species Specificity:

human

Cited Species:

human

Positive Controls:

WB : human brain tissue,

Background Information

Inhibin β A (INHBA) is a ligand in the transforming growth factor β (TGF- β) superfamily. Inhibin β A forms a disulfide-linked homo-dimer known as activin A, which has been implicated in multiple biologic processes, including neoplastic progression. The inhibin β A can also bind the β B and α isoforms to form activin AB and inhibin, respectively.

Notable Publications

| Author | Pubmed ID | Journal | Application |
|-----------------|-----------|----------------|-------------|
| Jian Sun | 28009989 | Oncotarget | WB |
| Loei Hendrick H | 22204653 | J Proteome Res | WB |

Storage

Storage:

Store at -20°C. Stable for one year after shipment.

Storage Buffer:

PBS with 0.1% sodium azide and 50% glycerol pH 7.3.

Aliquoting is unnecessary for -20°C storage

*** 20ul sizes contain 0.1% BSA

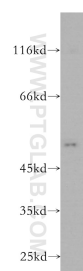
For technical support and original validation data for this product please contact:

T: 1 (888) 4PTGLAB (1-888-478-4522) (toll free in USA), or 1(312) 455-8498 (outside USA)

E: proteintech@ptglab.com
W: ptglab.com

This product is exclusively available under Proteintech Group brand and is not available to purchase from any other manufacturer.

Selected Validation Data



human brain tissue were subjected to SDS PAGE followed by western blot with 60015-1-Ig (Inhibin beta A antibody) at dilution of 1:300 incubated at room temperature for 1.5 hours.