

For Research Use Only

# KEAP1 Monoclonal antibody

Catalog Number: 60027-1-Ig

Featured Product

116 Publications



## Basic Information

**Catalog Number:**

60027-1-Ig

**Size:**

150ul, Concentration: 500 ug/ml by Bradford method using BSA as the standard;

**Source:**

Mouse

**Isotype:**

IgA

**Immunogen Catalog Number:**

AG0779

**GenBank Accession Number:**

BC002930

**GeneID (NCBI):**

9817

**UNIPROT ID:**

Q14145

**Full Name:**

kelch-like ECH-associated protein 1

**Calculated MW:**

624 aa, 70 kDa

**Observed MW:**

60-70 kDa

**Purification Method:**

Caprylic acid/ammonium sulfate precipitation

**CloneNo.:**

4G10H9

**Recommended Dilutions:**

WB 1:1000-1:4000

## Applications

**Tested Applications:**

WB, ELISA

**Cited Applications:**

WB, IHC, IF, IP, CoIP

**Species Specificity:**

human, mouse, rat

**Cited Species:**

human, mouse, rat, pig, chicken

**Positive Controls:**

WB : 4T1 cells, HeLa cells, HSC-T6 cells, Jurkat cells, MCF-7 cells, NIH/3T3 cells

## Background Information

KEAP1, also named as INRF2, KIAA0132 and KLHL19, is part of a multiprotein complex that contains the CUL3-ROC1 ubiquitin ligase, which can ubiquitinate the N-terminal domain of NRF2. Two molecules of KEAP1 bind to two distinct sites in the N-terminal region of NRF2, the ETGE and DLG sites, which affect the KEAP1-NRF2 interaction and/or its physiological consequences. KEAP1 retains NFE2L2/NRF2 in the cytosol. It functions as substrate adapter protein for the E3 ubiquitin ligase complex formed by CUL3 and RBX1. It also retains BPTF in the cytosol. This antibody is a mouse monoclonal antibody raised against residues near the C terminus of human KEAP1.

## Notable Publications

Author	Pubmed ID	Journal	Application
Jinliang Liu	34630847	Oxid Med Cell Longev	WB
Lei Zhao	34582963	Food Chem Toxicol	WB
Yue Li	36234847	Molecules	WB

## Storage

**Storage:**

Store at -20°C. Stable for one year after shipment.

**Storage Buffer:**

PBS with 0.02% sodium azide and 50% glycerol, pH7.3

Aliquoting is unnecessary for -20°C storage

\*\*\* 20ul sizes contain 0.1% BSA

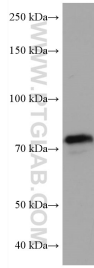
For technical support and original validation data for this product please contact:

T: 1 (888) 4PTGLAB (1-888-478-4522) (toll free in USA), or 1(312) 455-8498 (outside USA)

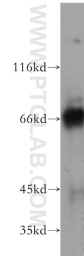
E: proteintech@ptglab.com  
W: ptglab.com

This product is exclusively available under Proteintech Group brand and is not available to purchase from any other manufacturer.

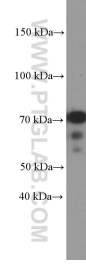
## Selected Validation Data



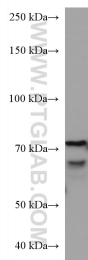
4T1 cells were subjected to SDS PAGE followed by western blot with 60027-1-Ig (KEAP1 antibody) at dilution of 1:2000 incubated at room temperature for 1.5 hours.



HeLa cells were subjected to SDS PAGE followed by western blot with 60027-1-Ig (KEAP1 antibody) at dilution of 1:400 incubated at room temperature for 1.5 hours.



MCF-7 cells were subjected to SDS PAGE followed by western blot with 60027-1-Ig (KEAP1 Antibody) at dilution of 1:1000 incubated at room temperature for 1.5 hours.



Jurkat cells were subjected to SDS PAGE followed by western blot with 60027-1-Ig (KEAP1 antibody) at dilution of 1:2000 incubated at room temperature for 1.5 hours.