

For Research Use Only

# KMO Monoclonal antibody

Catalog Number: 60029-1-Ig **3 Publications**



## Basic Information

<b>Catalog Number:</b> 60029-1-Ig	<b>GenBank Accession Number:</b> BC005297	<b>Purification Method:</b> Protein A purification
<b>Size:</b> 150ul , Concentration: 620 µg/ml by Bradford method using BSA as the standard;	<b>GeneID (NCBI):</b> 8564	<b>CloneNo.:</b> 2D2F2
<b>Source:</b> Mouse	<b>Full Name:</b> kynurenine 3-monooxygenase (kynurenine 3-hydroxylase)	<b>Recommended Dilutions:</b> WB 1:5000-1:50000
<b>Isotype:</b> IgG1	<b>Calculated MW:</b> 486 aa, 56 kDa	
<b>Immunogen Catalog Number:</b> AG1109	<b>Observed MW:</b> 56 kDa	

## Applications

<b>Tested Applications:</b> WB, ELISA	<b>Positive Controls:</b> WB : PC-3 cells, SKOV-3 cells
<b>Cited Applications:</b> IF, IHC	
<b>Species Specificity:</b> human	
<b>Cited Species:</b> human, mouse	

## Background Information

KMO (Kynurenine 3-monooxygenase) is a membrane protein located on the outer membrane of mitochondria. Tissue distribution studies have revealed that, in rats, highest enzyme activity is found in kidney and liver, with brain having the least activity in comparison to peripheral organs (PMID: 9237672).

## Notable Publications

Author	Pubmed ID	Journal	Application
NANAKA MORITA	34584567	Oncol Lett	IHC
Ron Korstanje	27020856	J Am Soc Nephrol	IF
Edit Bosnyák	26092774	Neuro Oncol	IHC

## Storage

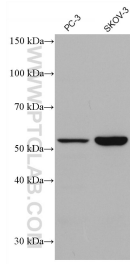
**Storage:**  
Store at -20°C. Stable for one year after shipment.  
**Storage Buffer:**  
PBS with 0.02% sodium azide and 50% glycerol pH 7.3.  
Aliquoting is unnecessary for -20°C storage

\*\*\* 20ul sizes contain 0.1% BSA

For technical support and original validation data for this product please contact:  
T: 1 (888) 4PTGLAB (1-888-478-4522) (toll free in USA), or 1(312) 455-8498 (outside USA)  
E: proteintech@ptglab.com  
W: ptglab.com

This product is exclusively available under Proteintech Group brand and is not available to purchase from any other manufacturer.

## Selected Validation Data



Various lysates were subjected to SDS PAGE followed by western blot with 60029-1-Ig (KMO antibody) at dilution of 1:10000 incubated at room temperature for 1.5 hours.