

For Research Use Only

FKBPL Monoclonal antibody

Catalog Number: 60030-1-Ig



Basic Information

Catalog Number: 60030-1-Ig	GenBank Accession Number: BC004168	Purification Method: Protein G purification
Size: 150ul , Concentration: 1000 µg/ml by Bradford method using BSA as the standard;	GeneID (NCBI): 63943	CloneNo.: 5D9A9
Source: Mouse	UNIPROT ID: Q9UIM3	Recommended Dilutions: WB 1:200-1:1000
Isotype: IgG1	Full Name: FK506 binding protein like	
Immunogen Catalog Number: AG0112	Calculated MW: 349 aa, 38 kDa	
	Observed MW: 42-48 kDa	

Applications

Tested Applications: WB, ELISA	Positive Controls: WB : mouse ovary tissue,
Species Specificity: human, mouse	

Background Information

FKBPL, also named as DIR1, NG7 and WISp39, has similarity to the immunophilin protein family, which plays a role in immunoregulation and basic cellular processes involving protein folding and trafficking. This protein is thought to have a potential role in the induced radioresistance, probably by increasing the rate of DNA repair in cells exposed to X rays. Also it appears to have some involvement in general stress response in the control of the cell cycle. It regulates p21 protein stability by binding to Hsp90 and p21. FKBPL is an estrogen-inducible gene that acts as a cochaperone in ERα/Hsp90 molecular complexes; furthermore, FKBPL levels may be both a prognostic indicator and determinant of response to endocrine therapy. (PMID:20103631, 15664193)

Storage

Storage:
Store at -20°C. Stable for one year after shipment.
Storage Buffer:
PBS with 0.1% sodium azide and 50% glycerol pH 7.3.
Aliquoting is unnecessary for -20°C storage

*** 20ul sizes contain 0.1% BSA

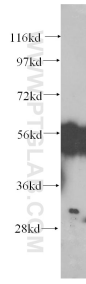
For technical support and original validation data for this product please contact:

T: 1 (888) 4PTGLAB (1-888-478-4522) (toll free
in USA), or 1(312) 455-8498 (outside USA)

E: proteintech@ptglab.com
W: ptglab.com

This product is exclusively available under Proteintech Group brand and is not available to purchase from any other manufacturer.

Selected Validation Data



mouse ovary tissue were subjected to SDS PAGE followed by western blot with 60030-1-Ig (FKBPL antibody) at dilution of 1:300 incubated at room temperature for 1.5 hours.