

For Research Use Only

DSE Monoclonal antibody

Catalog Number: 60041-1-Ig 1 Publications



Basic Information

Catalog Number: 60041-1-Ig	GenBank Accession Number: BC039245	Purification Method: Thiophilic affinity chromatograph
Size: 150ul , Concentration: 1200 ug/ml by Nanodrop and 1000 ug/ml by Bradford method using BSA as the standard;	GeneID (NCBI): 29940	CloneNo.: 2C9F7
Source: Mouse	UNIPROT ID: Q9UL01	Recommended Dilutions: WB 1:200-1:1000 IHC 1:20-1:200 IF/ICC 1:400-1:1600
Isotype: IgM	Full Name: dermatan sulfate epimerase	
Immunogen Catalog Number: AG0695	Calculated MW: 958 aa, 110 kDa	
	Observed MW: 100 kDa	

Applications

Tested Applications: WB, IHC, IF/ICC, ELISA	Positive Controls: WB : COLO 320 cells, IHC : human liver cancer tissue, IF/ICC : HeLa cells,
Cited Applications: WB	
Species Specificity: human	
Cited Species: mouse	
Note-IHC: suggested antigen retrieval with TE buffer pH 9.0; (*) Alternatively, antigen retrieval may be performed with citrate buffer pH 6.0	

Background Information

DSE, also named as SART2 and DSEPI, is an enzyme that converts D-glucuronic acid to L-iduronic acid residues in dermatan sulphate biosynthesis. It is also identified to be a tumour-associated antigen. DSE is recognized by cytotoxic T cells (CTLs) and its enhanced expression in many cancers has been reported. DSE is a potential candidate for a tumour antigen with immunogenicity.

Notable Publications

Author	Pubmed ID	Journal	Application
Jingyu Wang	36782279	Inflamm Regen	WB

Storage

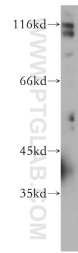
Storage:
Store at -20°C. Stable for one year after shipment.
Storage Buffer:
PBS with 0.1% sodium azide and 50% glycerol pH 7.3.
Aliquoting is unnecessary for -20°C storage

*** 20ul sizes contain 0.1% BSA

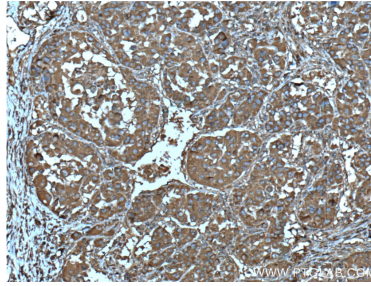
For technical support and original validation data for this product please contact:
T: 1 (888) 4PTGLAB (1-888-478-4522) (toll free in USA), or 1(312) 455-8498 (outside USA)
E: proteintech@ptglab.com
W: ptglab.com

This product is exclusively available under Proteintech Group brand and is not available to purchase from any other manufacturer.

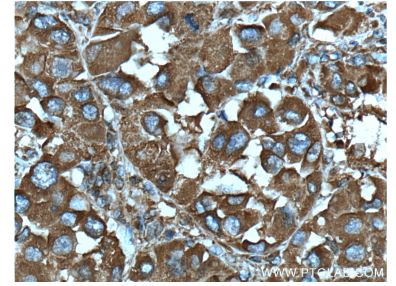
Selected Validation Data



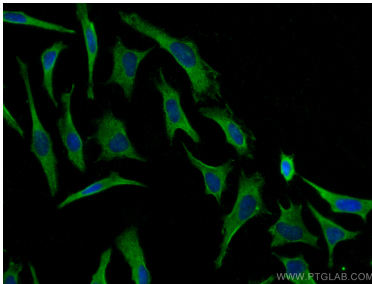
COLO 320 cells were subjected to SDS PAGE followed by western blot with 60041-1-Ig (DSE antibody) at dilution of 1:300 incubated at room temperature for 1.5 hours.



Immunohistochemical analysis of paraffin-embedded human liver cancer tissue slide using 60041-1-Ig (DSE Antibody) at dilution of 1:200 (under 10x lens). Heat mediated antigen retrieval with Tris-EDTA buffer (pH 9.0).



Immunohistochemical analysis of paraffin-embedded human liver cancer tissue slide using 60041-1-Ig (DSE Antibody) at dilution of 1:200 (under 40x lens). Heat mediated antigen retrieval with Tris-EDTA buffer (pH 9.0).



Immunofluorescent analysis of (-20°C Methanol) fixed HeLa cells using DSE antibody (60041-1-Ig, Clone: 2C9F7) at dilution of 1:800 and CoraLite®488-Conjugated AffiniPure Goat Anti-Mouse IgG(H+L).