

For Research Use Only

# DSE Monoclonal antibody, PBS Only

Catalog Number: 60041-1-PBS



## Basic Information

Catalog Number:

60041-1-PBS

Size:

100ug, Concentration: 1 mg/ml by  
Nanodrop;

Source:

Mouse

Isotype:

IgM

Immunogen Catalog Number:

AG0695

GenBank Accession Number:

BC039245

GeneID (NCBI):

29940

UNIPROT ID:

Q9UL01

Full Name:

dermatan sulfate epimerase

Calculated MW:

958 aa, 110 kDa

Observed MW:

100 kDa

Purification Method:

Thiophilic affinity chromatograph

CloneNo.:

2C9F7

## Applications

Tested Applications:

WB, IF, IHC, Indirect ELISA

Species Specificity:

human

## Background Information

DSE, also named as SART2 and DSEPI, is an enzyme that converts D-glucuronic acid to L-iduronic acid residues in dermatan sulphate biosynthesis. It is also identified to be a tumour-associated antigen. DSE is recognized by cytotoxic T cells (CTLs) and its enhanced expression in many cancers has been reported. DSE is a potential candidate for a tumour antigen with immunogenicity.

## Storage

Storage:

Store at -80°C.

Storage Buffer:

PBS Only

For technical support and original validation data for this product please contact:

T: 1 (888) 4PTGLAB (1-888-478-4522) (toll free  
in USA), or 1(312) 455-8498 (outside USA)

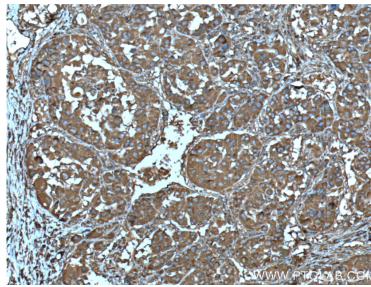
E: [proteintech@ptglab.com](mailto:proteintech@ptglab.com)  
W: [ptglab.com](http://ptglab.com)

This product is exclusively available under Proteintech Group brand and is not available to purchase from any other manufacturer.

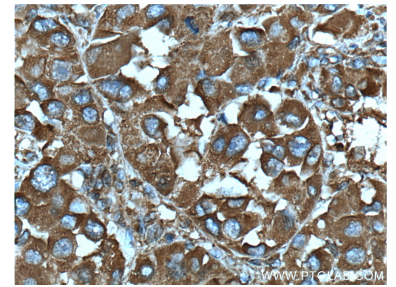
## Selected Validation Data



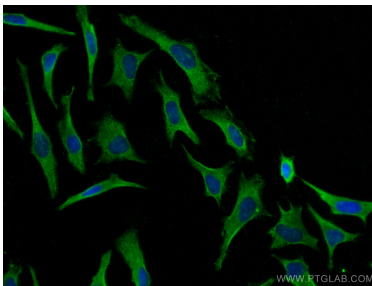
COLO 320 cells were subjected to SDS PAGE followed by western blot with 60041-1-Ig (DSE antibody) at dilution of 1:300 incubated at room temperature for 1.5 hours. This data was developed using the same antibody clone with 60041-1-PBS in a different storage buffer formulation.



Immunohistochemical analysis of paraffin-embedded human liver cancer tissue slide using 60041-1-Ig (DSE Antibody) at dilution of 1:200 (under 10x lens). Heat mediated antigen retrieval with Tris-EDTA buffer (pH 9.0). This data was developed using the same antibody clone with 60041-1-PBS in a different storage buffer formulation.



Immunohistochemical analysis of paraffin-embedded human liver cancer tissue slide using 60041-1-Ig (DSE Antibody) at dilution of 1:200 (under 40x lens). Heat mediated antigen retrieval with Tris-EDTA buffer (pH 9.0). This data was developed using the same antibody clone with 60041-1-PBS in a different storage buffer formulation.



Immunofluorescent analysis of (-20°C Methanol) fixed HeLa cells using DSE antibody (60041-1-Ig, Clone: 2C9F7) at dilution of 1:800 and CoraLite®488-Conjugated AffiniPure Goat Anti-Mouse IgG(H+L). This data was developed using the same antibody clone with 60041-1-PBS in a different storage buffer formulation.