

For Research Use Only

# SLAM/CD150 Monoclonal antibody

Catalog Number: 60043-1-Ig **1 Publications**



## Basic Information

<b>Catalog Number:</b> 60043-1-Ig	<b>GenBank Accession Number:</b> BC012602	<b>Purification Method:</b> Caprylic acid/ammonium sulfate precipitation
<b>Size:</b> 150ul, Concentration: 1000 µg/ml by Bradford method using BSA as the standard;	<b>GeneID (NCBI):</b> 6504	<b>CloneNo.:</b> 5B4G1
<b>Source:</b> mouse	<b>Full Name:</b> signaling lymphocytic activation molecule family member 1	<b>Recommended Dilutions:</b> WB 1:1000-1:4000
<b>Isotype:</b> IgM	<b>Calculated MW:</b> 37 kDa	
<b>Immunogen Catalog Number:</b> AG1386	<b>Observed MW:</b> 80 kDa	

## Applications

<b>Tested Applications:</b> WB, ELISA	<b>Positive Controls:</b> WB: Raji cells, HUVEC cells, Jurkat cells
<b>Cited Applications:</b> WB	
<b>Species Specificity:</b> human	
<b>Cited Species:</b> monkey	

## Background Information

Signaling lymphocytic activation molecule (SLAM, also known as SLAMF1 or CD150) is a 70-95 kDa transmembrane glycoprotein that belongs to the immunoglobulin gene superfamily. SLAM is constitutively expressed on peripheral blood memory T-cells, T-cell clones, immature thymocytes and a proportion of B-cells, and is rapidly induced on naive T-cells after activation. SLAM is involved in T cell stimulation and cytokine production, and may play an important role in the regulation of immune responses to pathogens.

## Notable Publications

Author	Pubmed ID	Journal	Application
Haofei Song	36552462	Animals (Basel)	WB

## Storage

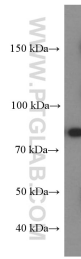
**Storage:**  
Store at -20°C. Stable for one year after shipment.  
**Storage Buffer:**  
PBS with 0.1% sodium azide and 50% glycerol pH 7.3.  
Aliquoting is unnecessary for -20°C storage

\*\*\* 20ul sizes contain 0.1% BSA

For technical support and original validation data for this product please contact:  
T: 1 (888) 4PTGLAB (1-888-478-4522) (toll free in USA), or 1(312) 455-8498 (outside USA)  
E: proteintech@ptglab.com  
W: ptglab.com

This product is exclusively available under Proteintech Group brand and is not available to purchase from any other manufacturer.

## Selected Validation Data



Raji cells were subjected to SDS PAGE followed by western blot with 60043-1-Ig (SLAM/CD150 antibody at dilution of 1:2000 incubated at room temperature for 1.5 hours.