

For Research Use Only

Transgelin 2 Monoclonal antibody

Catalog Number: 60044-1-Ig

Featured Product

5 Publications



Basic Information

Catalog Number:

60044-1-Ig

Size:

150ul, Concentration: 1200 ug/ml by Bradford method using BSA as the standard;

Source:

Mouse

Isotype:

IgG1

Immunogen Catalog Number:

AG0337

GenBank Accession Number:

BC002616

GeneID (NCBI):

8407

UNIPROT ID:

P37802

Full Name:

transgelin 2

Calculated MW:

199 aa, 22 kDa

Observed MW:

22 kDa

Purification Method:

Protein G purification

CloneNo.:

2E5G1

Recommended Dilutions:

WB 1:500-1:2000

IP 0.5-4.0 ug for 1.0-3.0 mg of total protein lysate

IHC 1:250-1:1000

IF-P 1:200-1:800

IF/ICC 1:400-1:1600

Applications

Tested Applications:

WB, IHC, IF/ICC, IF-P, IP, ELISA

Cited Applications:

WB, IF, CoIP

Species Specificity:

human, mouse

Cited Species:

human, mouse

Note-IHC: suggested antigen retrieval with TE buffer pH 9.0; (*) Alternatively, antigen retrieval may be performed with citrate buffer pH 6.0

Positive Controls:

WB : K562 cells, A549 cells, HEK-293 cells, MCF-7 cells

IP : HEK-293 cells,

IHC : human urothelial carcinoma tissue, human colon tissue, human colon cancer tissue, mouse colon tissue

IF-P : human colon cancer tissue,

IF/ICC : HepG2 cells,

Background Information

The transgelin family is a group of proteins that belong to 22 kDa actin-related corpnin superfamily. Of all three isoforms, transgelin 1 is the best characterized. Transgelin 1, also known as SM22 alpha, is a specific marker for differentiated smooth muscle cells. Transgelin 2, also known as SM22 beta, is expressed by both smooth muscle and non-smooth muscle cells in a temporally and spatially regulated pattern. Transgelin 3, also known as NP25, is only found in highly differentiated neuronal cells. Our test result showed that this antibody is specific to TAGLN2. It does not bind TAGLN1 and TAGLN3.

Notable Publications

Author	Pubmed ID	Journal	Application
Liu Yang	31485630	Mol Med Rep	WB
Yang Li	38992489	Cancer Lett	WB, CoIP
Liu Yang	38834267	Anal Chim Acta	WB

Storage

Storage:

Store at -20°C. Stable for one year after shipment.

Storage Buffer:

PBS with 0.1% sodium azide and 50% glycerol pH 7.3.

Aliquoting is unnecessary for -20°C storage

*** 20ul sizes contain 0.1% BSA

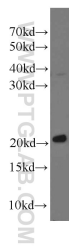
For technical support and original validation data for this product please contact:

T: 1 (888) 4PTGLAB (1-888-478-4522) (toll free in USA), or 1(312) 455-8498 (outside USA)

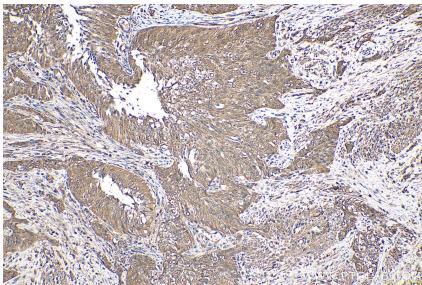
E: proteintech@ptglab.com
W: ptglab.com

This product is exclusively available under Proteintech Group brand and is not available to purchase from any other manufacturer.

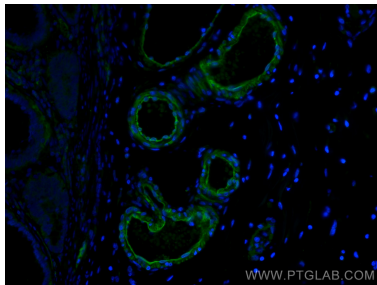
Selected Validation Data



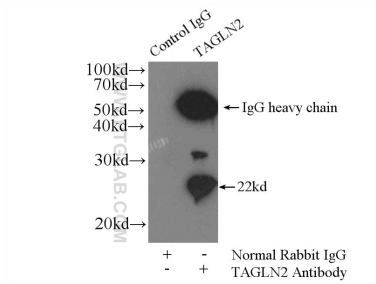
K-562 cells were subjected to SDS PAGE followed by western blot with 60044-1-Ig (Transgelin 2 antibody) at dilution of 1:1000 incubated at room temperature for 1.5 hours.



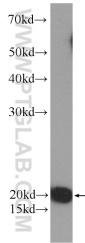
Immunohistochemical analysis of paraffin-embedded human urothelial carcinoma tissue slide using 60044-1-Ig (Transgelin 2 antibody) at dilution of 1:500 (under 10x lens). Heat mediated antigen retrieval with Tris-EDTA buffer (pH 9.0).



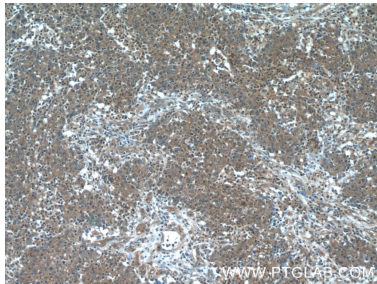
Immunofluorescent analysis of (4% PFA) fixed human colon cancer tissue using Transgelin 2 antibody (60044-1-Ig, Clone: 2E5G1) at dilution of 1:400 and CoraLite®488-Conjugated AffiniPure Goat Anti-Mouse IgG(H+L).



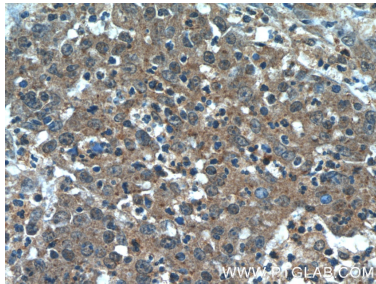
IP result of anti-Transgelin 2 (IP:60044-1-Ig, 4ug; Detection:60044-1-Ig 1:1000) with HEK-293 cells lysate 1000ug.



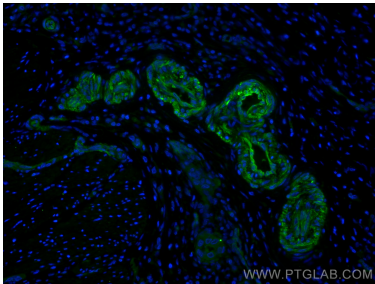
MCF-7 cells were subjected to SDS PAGE followed by western blot with 60044-1-Ig (Transgelin 2 antibody) at dilution of 1:1000 incubated at room temperature for 1.5 hours.



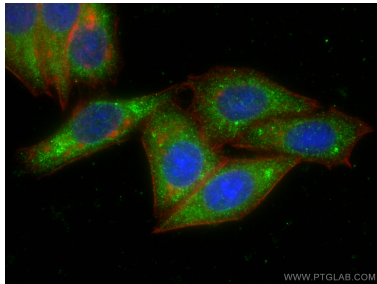
Immunohistochemical analysis of paraffin-embedded human colon cancer tissue slide using 60044-1-Ig (Transgelin 2 antibody) at dilution of 1:50 (under 10x lens).



Immunohistochemical analysis of paraffin-embedded human colon cancer tissue slide using 60044-1-Ig (Transgelin 2 antibody) at dilution of 1:50 (under 40x lens).



Immunofluorescent analysis of (4% PFA) fixed human colon cancer tissue using Transgelin 2 antibody (60044-1-Ig, Clone: 2E5G1) at dilution of 1:400 and CoraLite®488-Conjugated AffiniPure Goat Anti-Mouse IgG(H+L).



Immunofluorescent analysis of (-20°C Ethanol) fixed HepG2 cells using Transgelin 2 antibody (60044-1-Ig, Clone: 2E5G1) at dilution of 1:800 and CoraLite®488-Conjugated AffiniPure Goat Anti-Mouse IgG(H+L), CL594-Phalloidin (red).