

For Research Use Only

Transgelin 2 Monoclonal antibody, PBS Only



Catalog Number: 60044-1-PBS

Featured Product

Basic Information

Catalog Number:

60044-1-PBS

Size:

100ug, Concentration: 1mg/ml by Nanodrop;

Source:

Mouse

Isotype:

IgG1

Immunogen Catalog Number:

AG0337

GenBank Accession Number:

BC002616

GeneID (NCBI):

8407

UNIPROT ID:

P37802

Full Name:

transgelin 2

Calculated MW:

199 aa, 22 kDa

Observed MW:

22 kDa

Purification Method:

Protein G purification

CloneNo.:

2E5G1

Applications

Tested Applications:

WB, IHC, IF/ICC, IF-P, IP, Indirect ELISA

Species Specificity:

human, mouse

Background Information

The transgelin family is a group of proteins that belong to 22 kDa actin-related corpnin superfamily. Of all three isoforms, transgelin 1 is the best characterized. Transgelin 1, also known as SM22 alpha, is a specific marker for differentiated smooth muscle cells. Transgelin 2, also known as SM22 beta, is expressed by both smooth muscle and non-smooth muscle cells in a temporally and spatially regulated pattern. Transgelin 3, also known as NP25, is only found in highly differentiated neuronal cells. Our test result showed that this antibody is specific to TAGLN2. It does not bind TAGLN1 and TAGLN3.

Storage

Storage:

Store at -80°C.

Storage Buffer:

PBS Only

For technical support and original validation data for this product please contact:

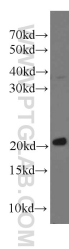
T: 1 (888) 4PTGLAB (1-888-478-4522) (toll free in USA), or 1(312) 455-8498 (outside USA)

E: proteintech@ptglab.com

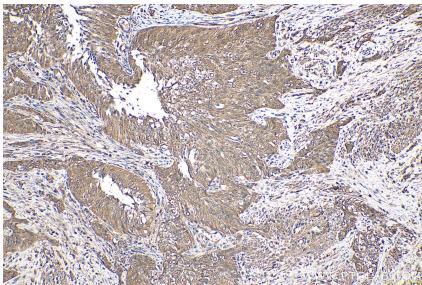
W: ptglab.com

This product is exclusively available under Proteintech Group brand and is not available to purchase from any other manufacturer.

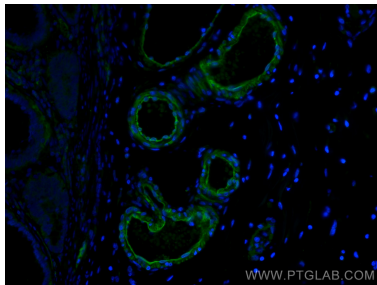
Selected Validation Data



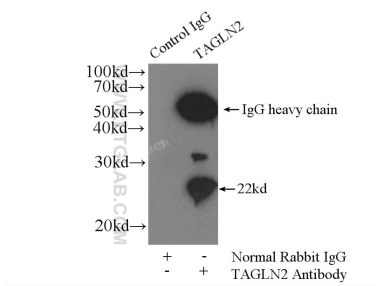
K-562 cells were subjected to SDS PAGE followed by western blot with 60044-1-Ig (Transgelin 2 antibody) at dilution of 1:1000 incubated at room temperature for 1.5 hours. This data was developed using the same antibody clone with 60044-1-PBS in a different storage buffer formulation.



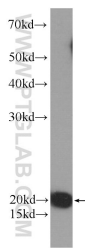
Immunohistochemical analysis of paraffin-embedded human urothelial carcinoma tissue slide using 60044-1-Ig (Transgelin 2 antibody) at dilution of 1:500 (under 10x lens). Heat mediated antigen retrieval with Tris-EDTA buffer (pH 9.0). This data was developed using the same antibody clone with 60044-1-PBS in a different storage buffer formulation.



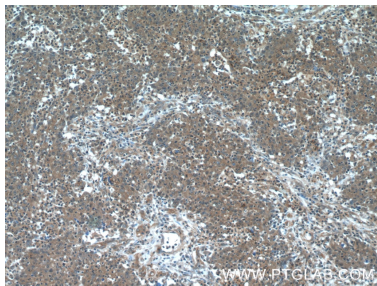
Immunofluorescent analysis of (4% PFA) fixed human colon cancer tissue using Transgelin 2 antibody (60044-1-Ig, Clone: 2E5G1) at dilution of 1:400 and CoraLite®488-Conjugated AffiniPure Goat Anti-Mouse IgG(H+L). This data was developed using the same antibody clone with 60044-1-PBS in a different storage buffer formulation.



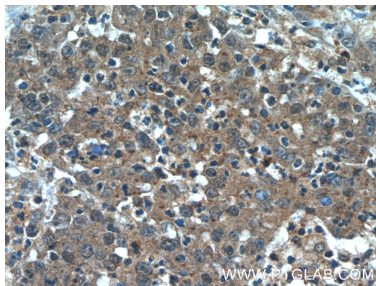
IP result of anti-Transgelin 2 (IP:60044-1-Ig, 4ug; Detection:60044-1-Ig 1:1000) with HEK-293 cells lysate 1000ug. This data was developed using the same antibody clone with 60044-1-PBS in a different storage buffer formulation.



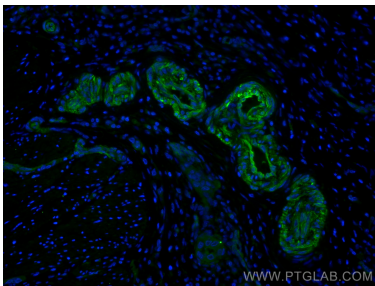
MCF-7 cells were subjected to SDS PAGE followed by western blot with 60044-1-Ig (Transgelin 2 antibody) at dilution of 1:1000 incubated at room temperature for 1.5 hours. This data was developed using the same antibody clone with 60044-1-PBS in a different storage buffer formulation.



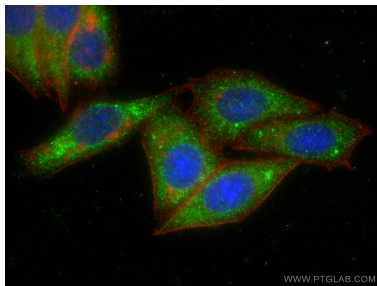
Immunohistochemical analysis of paraffin-embedded human colon cancer tissue slide using 60044-1-Ig (Transgelin 2 antibody) at dilution of 1:50 (under 10x lens). This data was developed using the same antibody clone with 60044-1-PBS in a different storage buffer formulation.



Immunohistochemical analysis of paraffin-embedded human colon cancer tissue slide using 60044-1-Ig (Transgelin 2 antibody) at dilution of 1:50 (under 40x lens). This data was developed using the same antibody clone with 60044-1-PBS in a different storage buffer formulation.



Immunofluorescent analysis of (4% PFA) fixed human colon cancer tissue using Transgelin 2 antibody (60044-1-Ig, Clone: 2E5G1) at dilution of 1:400 and CoraLite®488-Conjugated AffiniPure Goat Anti-Mouse IgG(H+L). This data was developed using the same antibody clone with 60044-1-PBS in a different storage buffer formulation.



Immunofluorescent analysis of (-20°C Ethanol) fixed HepG2 cells using Transgelin 2 antibody (60044-1-Ig, Clone: 2E5G1) at dilution of 1:800 and CoraLite®488-Conjugated AffiniPure Goat Anti-Mouse IgG(H+L), CL594-Phalloidin (red). This data was developed using the same antibody clone with 60044-1-PBS in a different storage buffer formulation.