

For Research Use Only

EMILIN1 Monoclonal antibody

Catalog Number: 60047-1-Ig 2 Publications



Basic Information

Catalog Number: 60047-1-Ig	GenBank Accession Number: BC007530	Purification Method: Protein G purification
Size: 150ul , Concentration: 1300 ug/ml by Nanodrop and 1000 ug/ml by Bradford method using BSA as the standard;	GeneID (NCBI): 11117	CloneNo.: 2A5C8
Source: Mouse	UNIPROT ID: Q9Y6C2	Recommended Dilutions: WB 1:2000-1:10000 IHC 1:1000-1:4000 IF-P 1:200-1:800
Isotype: IgG1	Full Name: elastin microfibril interfacier 1	
Immunogen Catalog Number: AG1016	Calculated MW: 107 kDa	
	Observed MW: 120-130 kDa	

Applications

Tested Applications:

WB, IHC, IF-P, ELISA

Cited Applications:

IF, IHC

Species Specificity:

human

Cited Species:

human

Note-IHC: suggested antigen retrieval with *TE buffer pH 9.0*; (*) Alternatively, antigen retrieval may be performed with *citrate buffer pH 6.0*

Positive Controls:

WB : human colon tissue, human rectum tissue

IHC : human ovary tumor tissue, human lung cancer tissue, human kidney tissue, human colon tissue

IF-P : human ovary tumor tissue,

Background Information

EMILIN1, also named as EMILIN, EMILIN-1, gp115 and EMI, may be responsible for anchoring smooth muscle cells to elastic fibers, and may be involved not only in the formation of the elastic fiber, but also in the processes that regulate vessel assembly. It has cell adhesive capacity. EMILIN1 is a negative regulator of the transforming growth factor-beta (TGF-beta) signaling, which is involved in blood pressure (BP) homeostasis (PMID:20186130). EMILIN1 may play a key role in hypertensive vascular remodeling. TGFβ proteins are the main regulators of blood vessel development and maintenance, and EMILIN1 inhibits TGFβ signaling by binding specifically to the proTGFβ precursor and preventing its maturation by furin convertases in the extracellular space (PMID:19922630).

Notable Publications

Author	Pubmed ID	Journal	Application
Nakatomi Yuka Y	20701466	Connect Tissue Res	IF
Fachinelli A A	21400085	Hernia	IHC

Storage

Storage:

Store at -20°C. Stable for one year after shipment.

Storage Buffer:

PBS with 0.1% sodium azide and 50% glycerol pH 7.3.

Aliquoting is unnecessary for -20°C storage

*** 20ul sizes contain 0.1%BSA

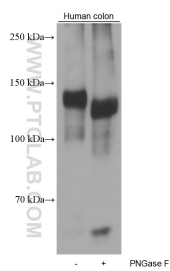
For technical support and original validation data for this product please contact:

T: 1 (888) 4PTGLAB (1-888-478-4522) (toll free in USA), or 1(312) 455-8498 (outside USA)

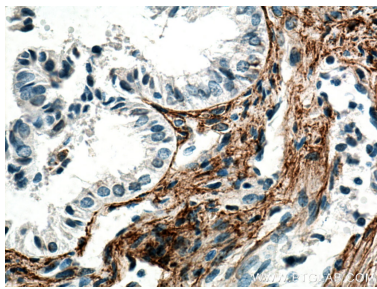
E: proteintech@ptglab.com
W: ptglab.com

This product is exclusively available under Proteintech Group brand and is not available to purchase from any other manufacturer.

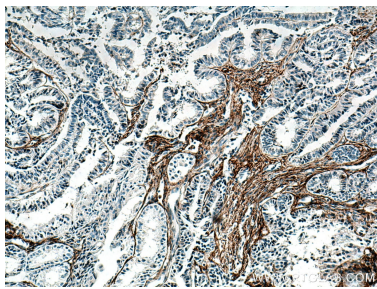
Selected Validation Data



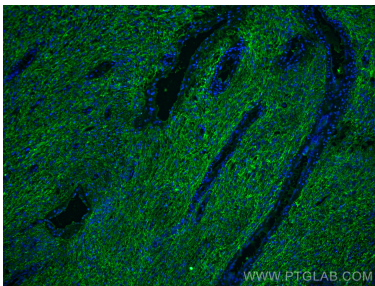
Untreated and PNGase F-treated lysates of human colon tissue were subjected to SDS PAGE followed by western blot with 60047-1-Ig (EMILIN1 antibody) at dilution of 1:10000 incubated at room temperature for 1.5 hours. PNGase F was obtained from Atagenix (cat.NO. ata808).



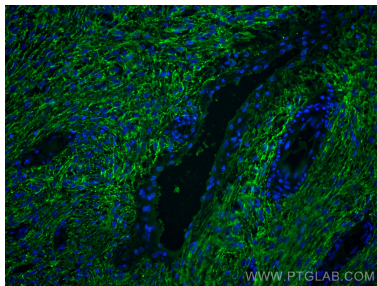
Immunohistochemical analysis of paraffin-embedded human ovary tumor tissue slide using 60047-1-Ig (EMILIN1 antibody) at dilution of 1:2000 (under 40x lens). Heat mediated antigen retrieval with Tris-EDTA buffer (pH 9.0).



Immunohistochemical analysis of paraffin-embedded human ovary tumor tissue slide using 60047-1-Ig (EMILIN1 antibody) at dilution of 1:2000 (under 10x lens). Heat mediated antigen retrieval with Tris-EDTA buffer (pH 9.0).



Immunofluorescent analysis of (4% PFA) fixed human ovary tumor tissue using EMILIN1 antibody (60047-1-Ig, Clone: 2A5C8) at dilution of 1:400 and CoraLite®488-Conjugated AffiniPure Goat Anti-Mouse IgG(H+L).



Immunofluorescent analysis of (4% PFA) fixed human ovary tumor tissue using EMILIN1 antibody (60047-1-Ig, Clone: 2A5C8) at dilution of 1:400 and CoraLite®488-Conjugated AffiniPure Goat Anti-Mouse IgG(H+L).