

For Research Use Only

STOML2 Monoclonal antibody, PBS Only



Catalog Number: 60052-1-PBS

Featured Product

Basic Information

Catalog Number:

60052-1-PBS

Size:

100ug , Concentration: 1 mg/ml by Nanodrop;

Source:

Mouse

Isotype:

IgG2b

Immunogen Catalog Number:

AG0363

GenBank Accession Number:

BC002442

GeneID (NCBI):

30968

UNIPROT ID:

Q9UJZ1

Full Name:

stomatin (EPB72)-like 2

Calculated MW:

356 aa, 39 kDa

Observed MW:

39 kDa

Purification Method:

Protein A purification

CloneNo.:

1A2E9

Applications

Tested Applications:

WB, IP, IHC, Indirect ELISA

Species Specificity:

human, mouse, rat, pig

Background Information

Human stomatin (band 7.2b) is a 31-kDa erythrocyte membrane protein of unknown function but implicated in the control of ion channel permeability, mechanoreception, and lipid domain organization. Stomatin (EPB72)-like 2 (STOML2, synonyms: SLP-2, HSPC108) is a 38.5-kDa protein that is overall approximately 20% similar to human stomatin. STOML2 is also present in mature human erythrocytes, but lacks a characteristic NH(2)-terminal hydrophobic domain found in other stomatin homologues. STOML2 may link stomatin or other integral membrane proteins to the peripheral cytoskeleton and thereby play a role in regulating ion channel conductances or the organization of sphingolipid and cholesterol-rich lipid rafts.

Storage

Storage:

Store at -80°C.

Storage Buffer:

PBS Only

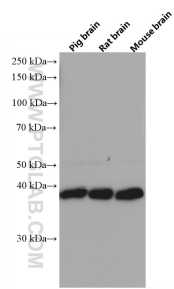
For technical support and original validation data for this product please contact:

T: 1 (888) 4PTGLAB (1-888-478-4522) (toll free in USA), or 1(312) 455-8498 (outside USA)

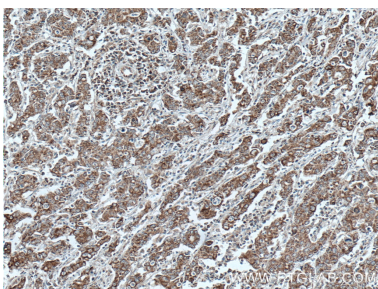
E: proteintech@ptglab.com
W: ptglab.com

This product is exclusively available under Proteintech Group brand and is not available to purchase from any other manufacturer.

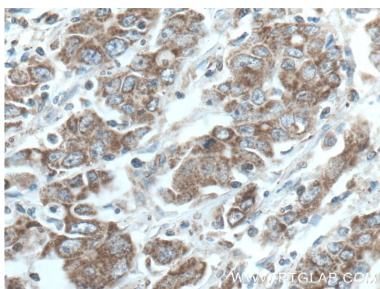
Selected Validation Data



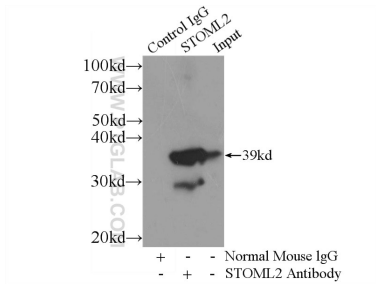
Pig, rat, and mouse brain tissues were subjected to SDS PAGE followed by western blot with 60052-1-Ig (STOML2 antibody) at dilution of 1:10000 incubated at room temperature for 1.5 hours. This data was developed using the same antibody clone with 60052-1-PBS in a different storage buffer formulation.



Immunohistochemical analysis of paraffin-embedded human stomach cancer tissue slide using 60052-1-Ig (STOML2 antibody) at dilution of 1:1000 (under 10x lens. Heat mediated antigen retrieval with Tris-EDTA buffer (pH 9.0). This data was developed using the same antibody clone with 60052-1-PBS in a different storage buffer formulation.



Immunohistochemical analysis of paraffin-embedded human stomach cancer tissue slide using 60052-1-Ig (STOML2 antibody) at dilution of 1:1000 (under 40x lens. Heat mediated antigen retrieval with Tris-EDTA buffer (pH 9.0). This data was developed using the same antibody clone with 60052-1-PBS in a different storage buffer formulation.



IP result of anti-STOML2 (IP:60052-1-Ig, 4ug; Detection:60052-1-Ig 1:1000) with mouse brain tissue lysate 4000ug. This data was developed using the same antibody clone with 60052-1-PBS in a different storage buffer formulation.