

For Research Use Only

MGP Monoclonal antibody, PBS Only

Catalog Number: 60055-1-PBS

Featured Product



Basic Information

Catalog Number:

60055-1-PBS

Size:

100ug, Concentration: 1mg/ml by Nanodrop;

Source:

Mouse

Isotype:

IgG2a

Immunogen Catalog Number:

AG1091

GenBank Accession Number:

BC005272

GeneID (NCBI):

4256

UNIPROT ID:

P08493

Full Name:

matrix Gla protein

Calculated MW:

103 aa, 13 kDa

Observed MW:

12 kDa

Purification Method:

Protein A purification

CloneNo.:

1A1C3

Applications

Tested Applications:

WB, IHC, IF-P, Indirect ELISA

Species Specificity:

human, mouse

Background Information

Matrix Gla protein (MGP) is a vitamin K-dependent, extracellular matrix protein. MGP plays a pivotal role in preventing soft tissue calcification and local mineralization of the vascular wall. Vitamin K deficiency leads to inactive uncarboxylated MGP (ucMGP), which accumulates at sites of arterial calcification. However MGP is synthesized in many tissues and is especially enriched in embryonic tissues and in cancer cells. Defects in MGP are the cause of Keutel syndrome (KS), which is an autosomal recessive disorder characterized by abnormal cartilage calcification, peripheral pulmonary stenosis neural hearing loss and midfacial hypoplasia.

Storage

Storage:

Store at -80°C.

Storage Buffer:

PBS Only

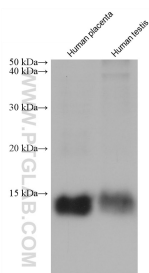
For technical support and original validation data for this product please contact:

T: 1 (888) 4PTGLAB (1-888-478-4522) (toll free in USA), or 1(312) 455-8498 (outside USA)

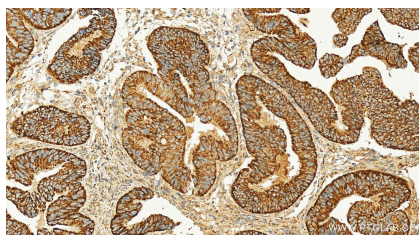
E: proteintech@ptglab.com
W: ptglab.com

This product is exclusively available under Proteintech Group brand and is not available to purchase from any other manufacturer.

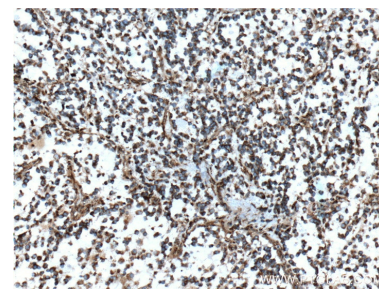
Selected Validation Data



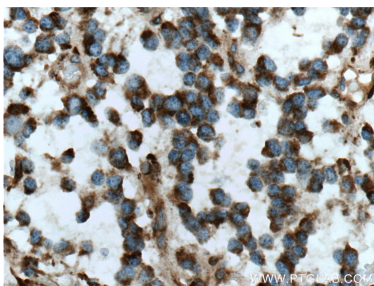
Various lysates were subjected to SDS PAGE followed by western blot with 60055-1-Ig (MGP antibody) at dilution of 1:5000 incubated at room temperature for 1.5 hours. This data was developed using the same antibody clone with 60055-1-PBS in a different storage buffer formulation.



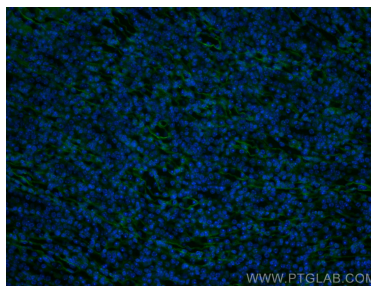
Immunohistochemical analysis of paraffin-embedded human colon cancer tissue slide using 60055-1-Ig (MGP antibody) at dilution of 1:800 (under 20x lens). Heat mediated antigen retrieval with Tris-EDTA buffer (pH 9.0). This data was developed using the same antibody clone with 60055-1-PBS in a different storage buffer formulation.



Immunohistochemical analysis of paraffin-embedded human gliomas tissue slide using 60055-1-Ig (MGP Antibody) at dilution of 1:800 (under 10x lens). This data was developed using the same antibody clone with 60055-1-PBS in a different storage buffer formulation.



Immunohistochemical analysis of paraffin-embedded human gliomas tissue slide using 60055-1-Ig (MGP Antibody) at dilution of 1:800 (under 40x lens). This data was developed using the same antibody clone with 60055-1-PBS in a different storage buffer formulation.



Immunofluorescent analysis of (4% PFA) fixed mouse kidney tissue using MGP antibody (60055-1-Ig, Clone: 1A1C3) at dilution of 1:400 and Coralite®488-Conjugated AffiniPure Goat Anti-Mouse IgG(H+L). This data was developed using the same antibody clone with 60055-1-PBS in a different storage buffer formulation.