

For Research Use Only

ATG5 Monoclonal antibody

Catalog Number: 60061-1-Ig

Featured Product

6 Publications



Basic Information

Catalog Number:

60061-1-Ig

Size:

150ul, Concentration: 793 µg/ml by Bradford method using BSA as the standard;

Source:

Mouse

Isotype:

IgM

Immunogen Catalog Number:

AG0214

GenBank Accession Number:

BC002699

GeneID (NCBI):

9474

UNIPROT ID:

Q9H1Y0

Full Name:

ATG5 autophagy related 5 homolog (S. cerevisiae)

Calculated MW:

32 kDa

Observed MW:

55 kDa

Purification Method:

Caprylic acid/ammonium sulfate precipitation

CloneNo.:

3G6E6

Recommended Dilutions:

WB 1:500-1:2000

IHC 1:50-1:500

IF/ICC 1:50-1:500

Applications

Tested Applications:

WB, IF, IHC, ELISA

Cited Applications:

WB, IF, IHC

Species Specificity:

human, mouse

Cited Species:

human, mouse

Note-IHC: suggested antigen retrieval with TE buffer pH 9.0; (*) Alternatively, antigen retrieval may be performed with citrate buffer pH 6.0

Positive Controls:

WB: K-562 cells, HeLa cells

IHC: human colon cancer tissue,

IF/ICC: HeLa cells,

Background Information

ATG5, also named as APG5L and ASP, belongs to the ATG5 family. It is required for autophagy. It plays an important role in the apoptotic process, possibly within the modified cytoskeleton. Its expression is a relatively late event in the apoptotic process, occurring downstream of caspase activity. Autophagy is a catabolic process for the autophagosomic-lysosomal degradation of bulk cytoplasmic contents. Formation of the autophagosome involves a ubiquitin-like conjugation system in which Atg12 is covalently bound to Atg5 and targeted to autophagosome vesicles. It mediates autophagosome-independent host protection.

Notable Publications

Author	Pubmed ID	Journal	Application
Shuo Wang	29039550	Mol Med Rep	WB
Jingjing Zheng	34058434	Cells Dev	WB
Qian Huang	32677505	Autophagy	WB

Storage

Storage:

Store at -20°C. Stable for one year after shipment.

Storage Buffer:

PBS with 0.02% sodium azide and 50% glycerol pH 7.3.

Aliquoting is unnecessary for -20°C storage

*** 20ul sizes contain 0.1% BSA

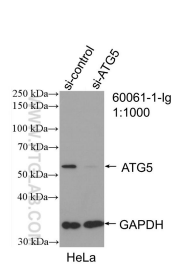
For technical support and original validation data for this product please contact:

T: 1 (888) 4PTGLAB (1-888-478-4522) (toll free in USA), or 1(312) 455-8498 (outside USA)

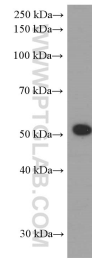
E: proteintech@ptglab.com
W: ptglab.com

This product is exclusively available under Proteintech Group brand and is not available to purchase from any other manufacturer.

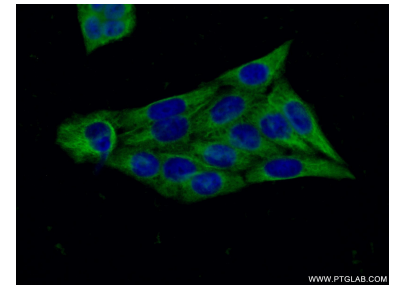
Selected Validation Data



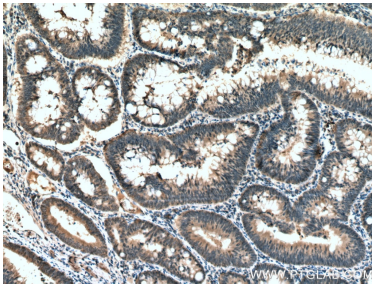
WB result of ATG5 antibody (60061-1-Ig; 1:1000; incubated at room temperature for 1.5 hours) with sh-Control and sh-ATG5 transfected HeLa cells.



K-562 cells were subjected to SDS PAGE followed by western blot with 60061-1-Ig (ATG5 Antibody) at dilution of 1:1000 incubated at room temperature for 1.5 hours.



Immunofluorescent analysis of (-20°C Ethanol) fixed HeLa cells using 60061-1-Ig(ATG5 antibody) at dilution of 1:100 and Alexa Fluor 488-conjugated AffiniPure Goat Anti-Mouse IgG(H+L).



Immunohistochemical analysis of paraffin-embedded human colon cancer tissue slide using 60061-1-Ig (ATG5 antibody) at dilution of 1:200 (under 10x lens). Heat mediated antigen retrieval with Tris-EDTA buffer (pH 9.0).